

Perforated Mesh Barrier Fitting Instructions

Vehicle Make: Hyundai

Vehicle Model: Staria Load

Vehicle Date of Manufacture: 2021 onwards

Part Number: CBTT52

Barrier Position: Behind first row of seats in the vehicle

Installation time approximately 1/2 Hour

(The estimated installation time is determined by a skilled fitter who is familiar with the fitting process.)

This cargo barrier is designed to be securely positioned behind the first row of seats in an upright manner. Proper installation requires a high level of technical expertise, and we strongly recommend that it be carried out by an authorized service provider to ensure compliance with the AS/NZS 4034 Standard. The primary purpose of the cargo barrier is to mitigate the risk of injury to vehicle occupants from cargo in the event of an accident, effectively preventing cargo from encroaching into the passenger area.

IMPORTANT INFORMATION

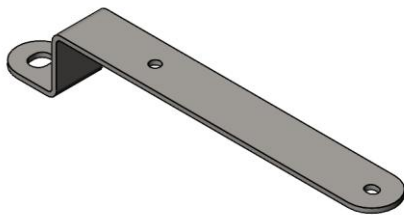
Strict adherence to the fitting instructions is crucial for this safety product to achieve its intended capacity; please consult the user manual for proper cargo barrier usage. Modifications to the cargo barrier or its installation in vehicles for which it is not designed can invalidate the load rating and warranty. It is imperative not to attach the cargo barrier using seat belts or child restraint anchorages, and when using high tensile threaded fasteners, ensure they meet the specifications provided by Tradie Tuff. Avoid drilling, riveting, or adhering objects to the cargo barrier, and position loads securely against it, using a restraint system to prevent movement during a collision. Care should be taken to ensure that cargo does not obstruct seat belts or child restraints, and long, thin items should be oriented across the vehicle to reduce penetration risk. In the event of an accident or damage, the cargo barrier must be replaced, and any anchorage should be restored to its original condition. Cleaning should be done with soap and water only, avoiding solvents or chemicals, and the cargo barrier should be discarded if rusted or exposed to prolonged sunlight. It is highly dangerous to occupy the cargo area behind the barrier, and removal of the barrier is advised, as unrestrained individuals in this space are at significant risk during a collision.

NOTICE TO INSTALLERS & DISTRIBUTORS

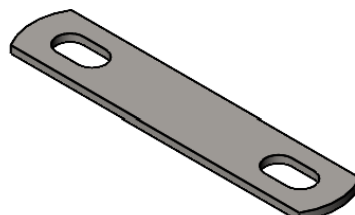
Please ensure Fitting Instructions are left with vehicle owner after installation.

Kit Inclusions:

QTY	DESCRIPTION	PART #
6	M10 x 25mm DOME HEAD BOLT	
2	M10 x 50 x 1.25 DOME HEAD BOLT	
6	M10 WHIZZ NUT	
8	M10 x 21mm FLAT WASHER	
2	M10 SPRING WASHER	
4	M6 x 20mm PH3 SCREW	
4	M6 x 12mm FLAT WASHER	
4	M6 SPRING WASHER	
2	TOP BRACKET	052- 6
2	TOP STRAP	052- 7
2	BOTTOM STRAP – SUIT PLY FLOOR	052- 8
2	BOTTOM STRAP – WITHOUT PLY FLOOR	052- 9
2	SPACER TUBES 16mm x 25mm	052-10



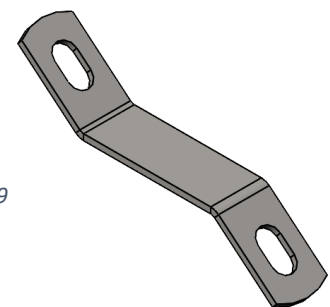
052-6



052-7



052-8



052-9



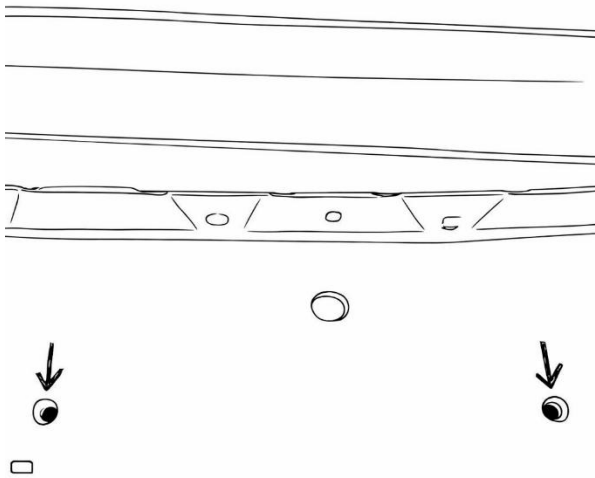
052-10

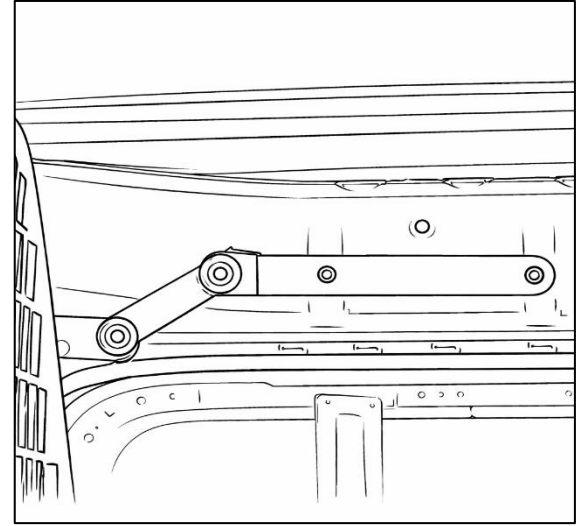
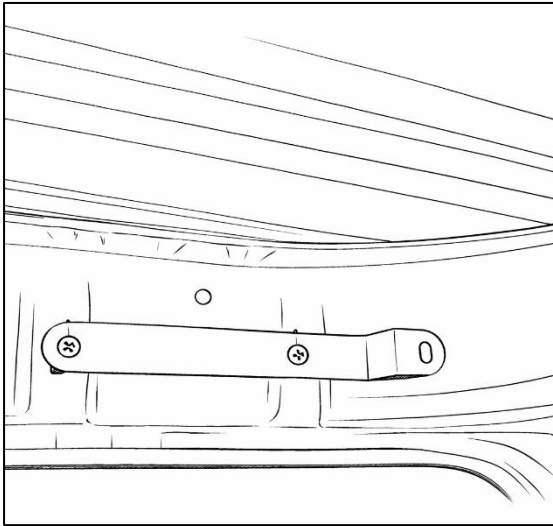
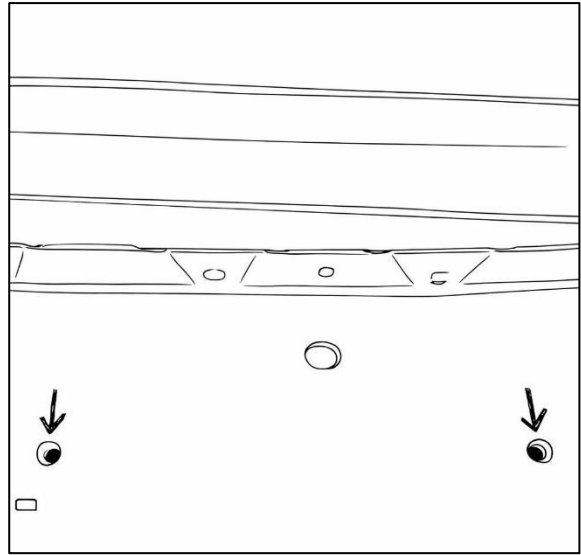
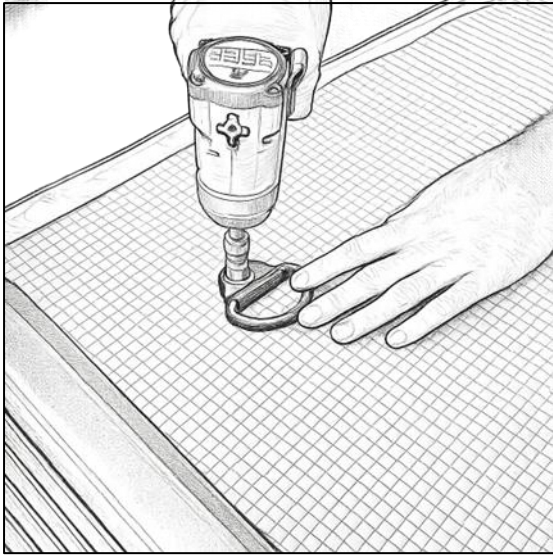
Step 1.

Upper Mounts:

- Remove set of tie down rings from vehicle floor directly behind 1st row seats.
- Fit the mounting brackets 052-6 to the M6 factory captive points above sliding door opening on both sides using M6x20 Dome Head bolts with M6 spring and flat washers, tighten to 9.5NM.
- Place barrier into position and secure top strap 052-7 between the barrier and the 052-6 previously fitted bracket using M10x25 dome head bolts with flat washers and whizz nuts.

NB: If the barrier is too far into cargo space, you can use the supplementary kit, 052-7, 126mm straight strap and attach between the barrier and the top mounting bracket 052-6 to bring the top of the barrier closer to the cabin.





Step 2.

Lower Mounts without ply floor:

- Attach the bottom 150mm 052-9 off set strap to the cargo barrier lower lugs on the barrier using M10 x 25 dome head bolts flat washer and whizz nuts.
- Fit the other end of the 150mm 052-09 to the factory tie down point using the original hardware.
- Tighten all M10 hardware to 17nm.

Lower Mounts with ply floor:

- Replace the 150mm 052-9 straps with the supplied 150mm 052-8.
- Drill out the ply floor mounting positions to 16mm. Place the 16 x 25 spacer in floor then secure through into the original tie down point with M10 x 50 x 1.25 hex head bolt and flat and spring washer.
- Tighten all M10 hardware to 17nm.

