



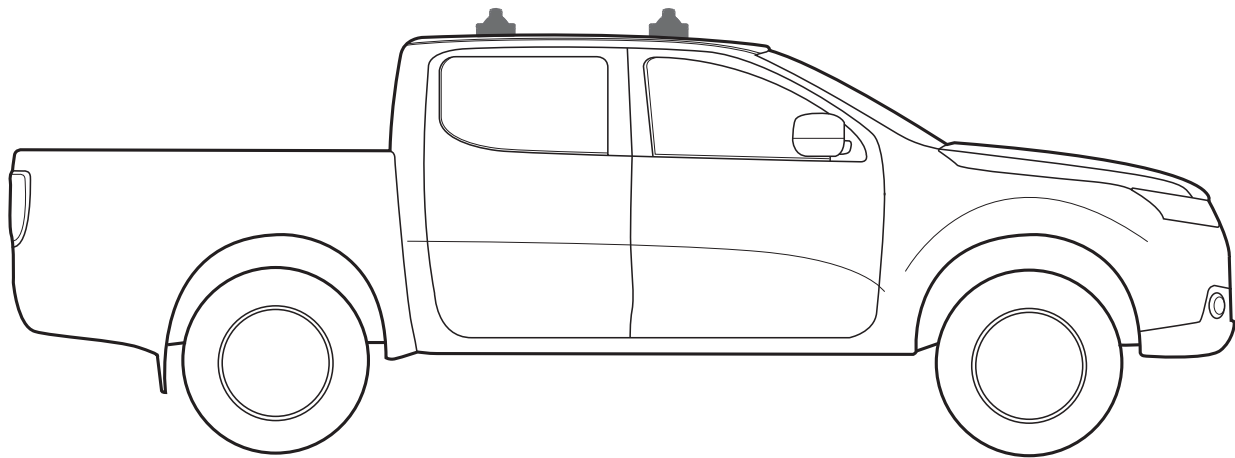
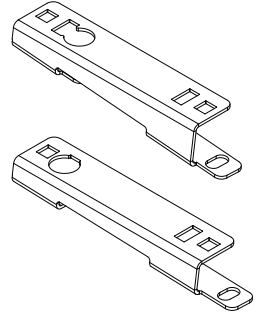
'Tradie Tuff'

COMMERCIAL ROOF RACKS

ISUZU DMAX GEN 2 TF
(LS-U/ LS-M/ X-RUNNER) CREW CAB, 12 - 20

FIXED MOUNT

PART NUMBER: VAS.RC1139, VAS.RA1139, VAS.RC1140, VAS.RA1140, VAS.RC1081, VAS.RA1081, VAS.RC1085, VAS.RA1085.



Note:

- PLEASE READ INSTRUCTIONS AND CHECK CONTENT PRIOR TO INSTALLING.
- PLACE INSTRUCTIONS IN VEHICLES GLOVE COMPARTMENT AFTER INSTALLING.



2 Bar maximum capacity: 100kg

Tested to AS/NZS 1235-2000 ADR standards

- Please check your vehicle's manual for vehicle load capacity (please do not exceed the lowest load rating) and please download and read our Load Rating guide which can be found on our website vas.com.au.
- Load rating is based on driving on sealed roads to road conditions and includes weight of the roof rack system.

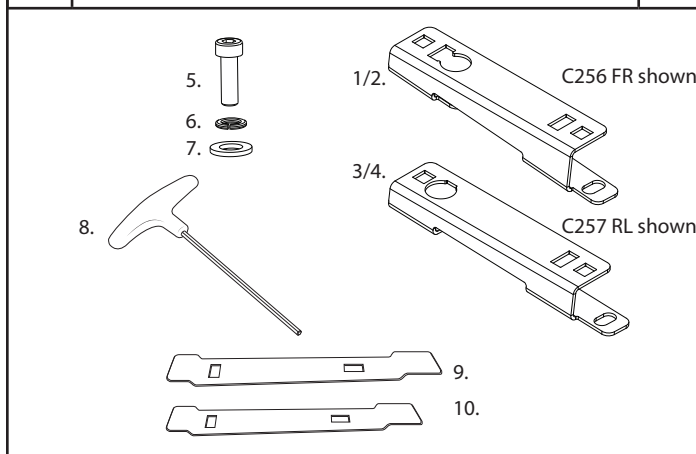
Important information

- Complete maintenance checks weekly including bolt connections and tightness.
- Heavy loads carried near feet
- Overhanging loads should conform to relevant state laws
- Check tie down strap tension every 50klm as loads can shift
- Specialised equipment carriers such as ladder slides should be used
- Ensure your roof racks, ladder rails and or load does not inhibit the tailgate lifting on vehicles manufactured with these doors
- Check car park heights before entering
- Keep load under the maximum capacity
- Use non stretch fastening straps
- Remove roof racks prior to using an automatic car wash

Note: The handling characteristics of a vehicle will change when a carrier system is fitted. Driving technique such as speed reduction, cornering techniques and braking distances should be altered to allow for these changes.

Kit Inclusions

Item	Part	2 Bar
1	Front Right Bracket - C256FR	1
2	Front Left Bracket - C256FL	1
3	Rear Left Bracket - C257RR	1
4	Rear Right Bracket - C257RL	1
5	M8 x 20mm Screw - F019	8
6	M6 Spring Washer - F012	8
7	M6 x 16mm Flat Washer - F011	8
8	4mm Allen Tool - C028	1
9	Front Ditch Bracket - C603	2
10	Rear Ditch Bracket - C604	2

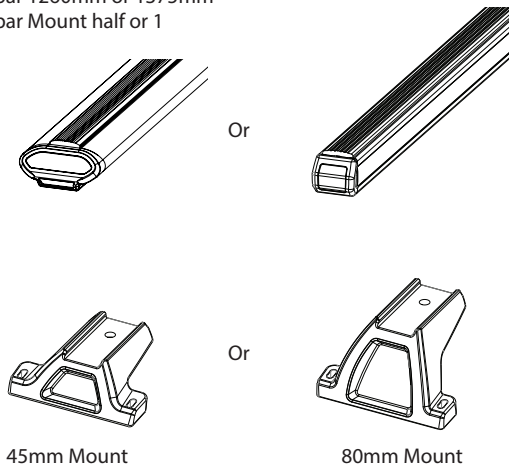


Tools Required

- 1 - Tape Measure.
- 2 - Drill and 5mm bit.
- 3 - Butyl Mastic Sealant.
- 4 - Cold Galvanising Paint.
- 5 - Nylon Scrape.
- 6 - Drill Guide.
- 7 - Marker.
- 8 - Masking Tape.
- 9 - Dremel.
- 10 - Rivet Gun.
- 11 - Vacuum.

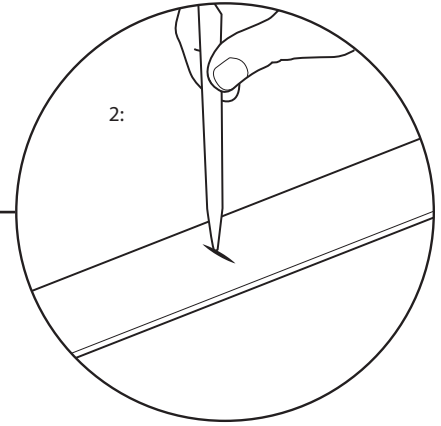
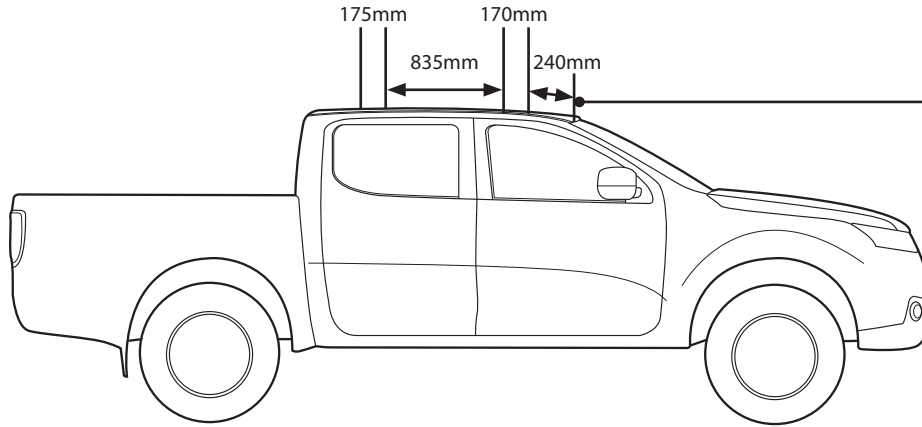
Required kits (as separate):

Crossbar 1260mm or 1375mm
Crossbar Mount half or 1



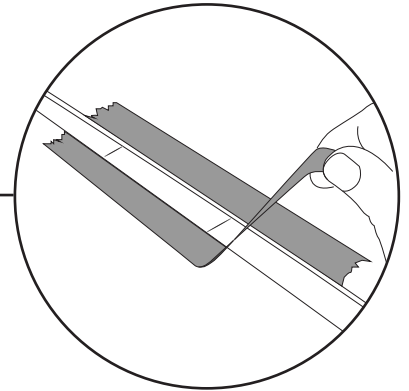
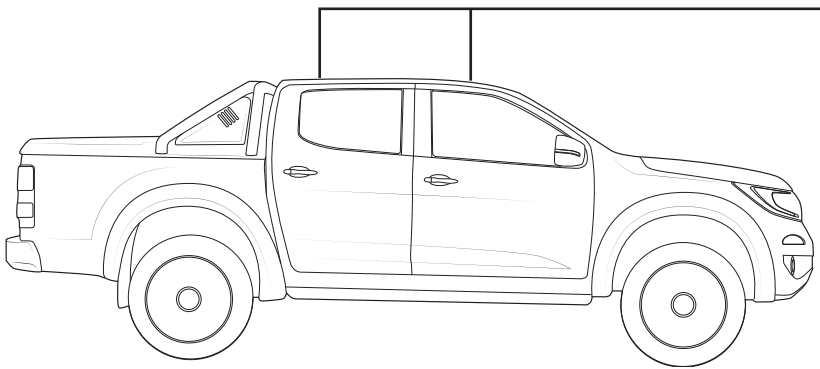
Step 1

- 1 - Measure back from the windscreen to the points shown.
- 2 - Create a mark at these points.



Step 2

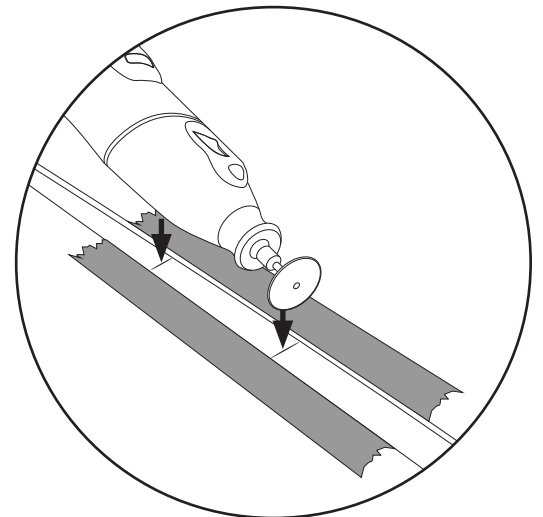
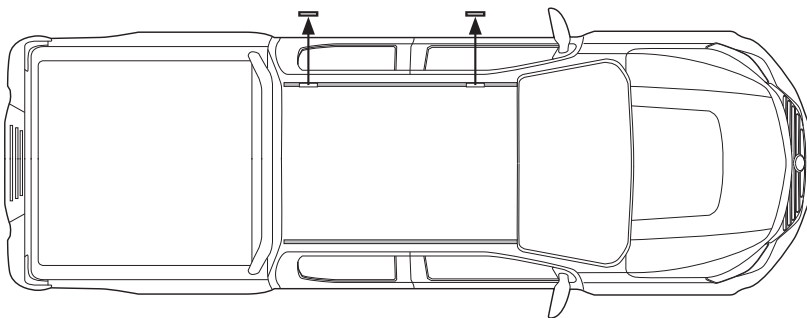
Using making tape, line the outsides of the ditch, either side of marks made previous. The tape should extend 50-100mm beyond the marks.



Step 3

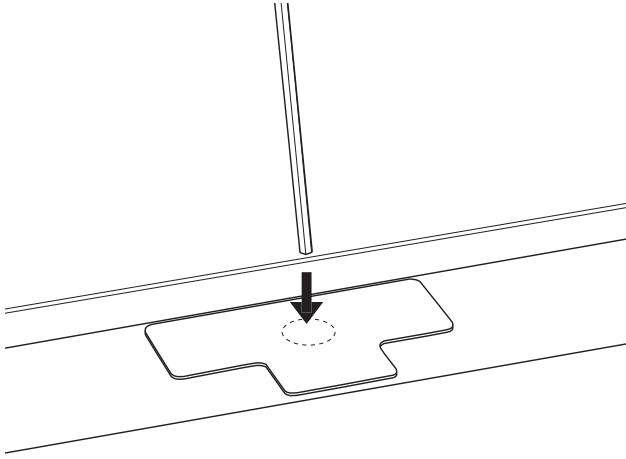
With a few layers of tape either side, carefully cut through the ditch fill along the bracket width marks using a dremel. Remove the cut sections and clean the area. Repeat for both sides.

Note - There is a metal line that runs through the ditch fill. Take care when cutting.

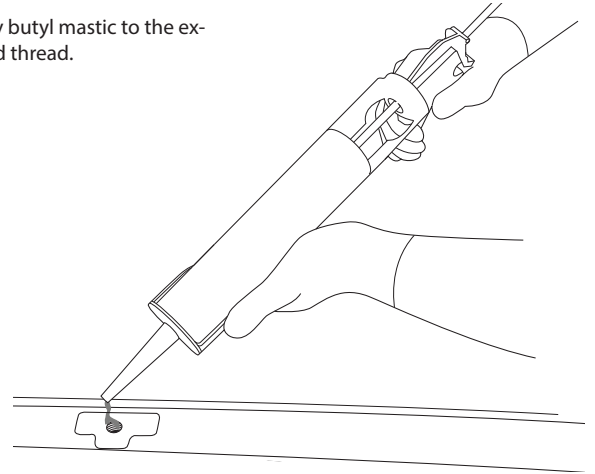


Step 4

locate the factory mount points, covered with butyl patches. **Note that these patches may be painted.** Using the allen key provided, carefully puncture the centre of the patch, exposing the thread below. **Note: There will be 4 either side, 2 at the front and 2 at the rear.**

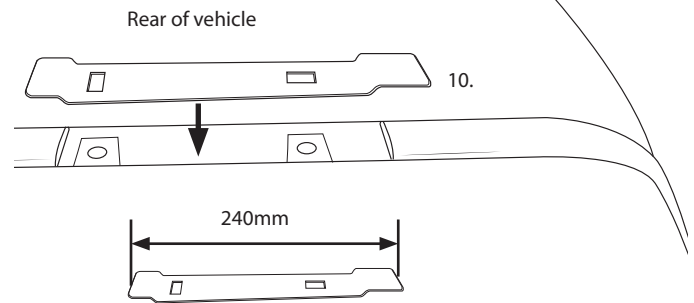
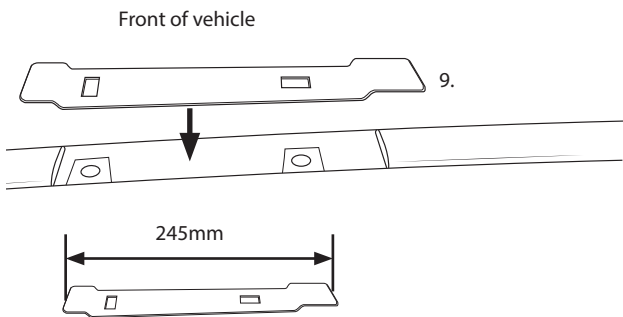


Apply butyl mastic to the exposed thread.



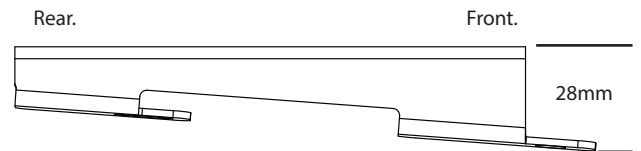
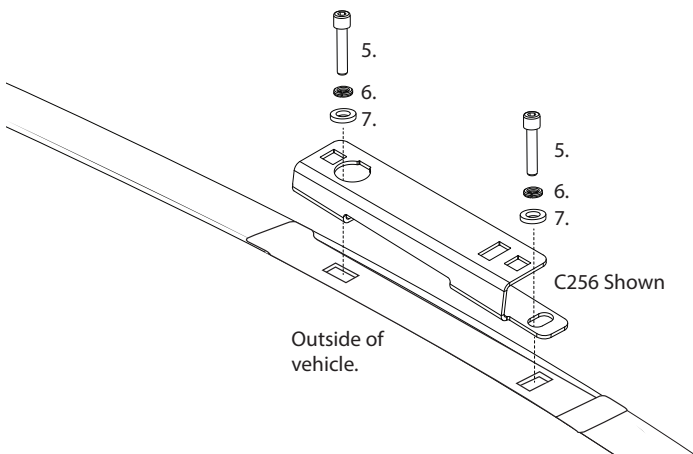
Step 5

Place the ditch fill brackets into place as shown.



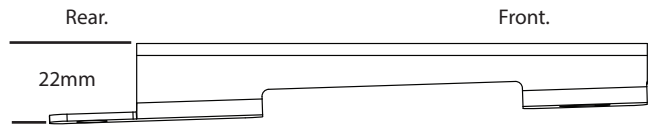
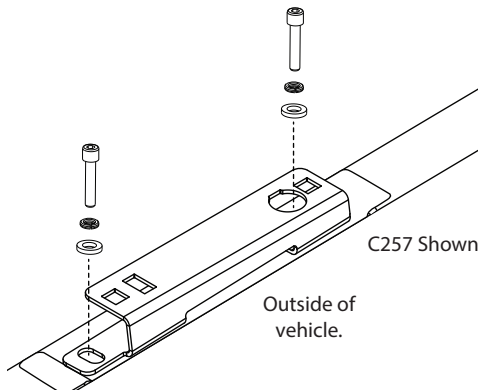
Step 6

Place the two front brackets into place as shown. Tighten with the allen key provided.



Step 6

Place the two rear brackets into place as shown. Tighten with the allen key provided.



Step 7

Complete crossbar mount kits as specified in their instructions. Place the crossbars onto the installed brackets in the roof. Fix in place with the M6 hardware provided and tighten with the allen key provided.

