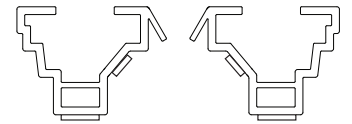




'Tradie Tuff'

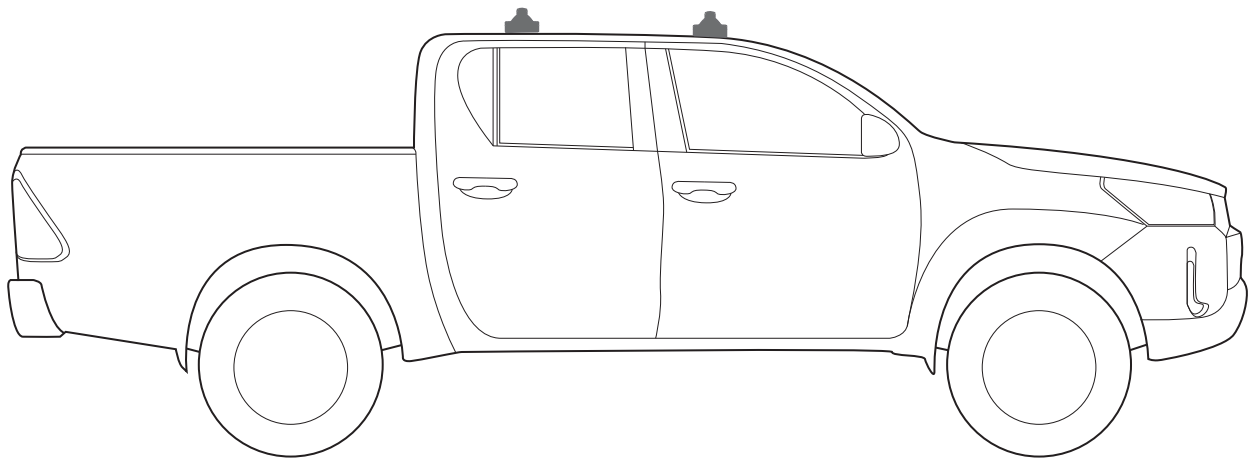
COMMERCIAL ROOF RACKS

TOYOTA HILUX GEN 7 & 8 CREW CAB, 15 - on



TRACK MOUNT

PART NUMBER: VAS.RA1145, VAS.RC1144, VAS.RC1145



Note:

- PLEASE READ INSTRUCTIONS AND CHECK CONTENT PRIOR TO INSTALLING.
- PLACE INSTRUCTIONS IN VEHICLES GLOVE COMPARTMENT AFTER INSTALLING.



2 Bar maximum capacity: 100kg

Tested to AS/NZS 1235-2000 ADR standards

- Please check your vehicle's manual for vehicle load capacity (please do not exceed the lowest load rating) and please download and read our Load Rating guide which can be found on our website vas.com.au.
- Load rating is based on driving on sealed roads to road conditions and includes weight of the roof rack system.

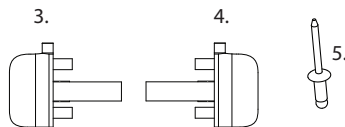
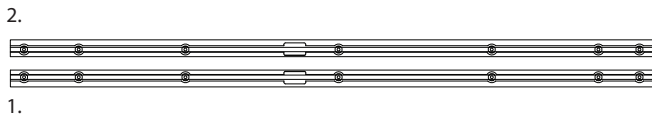
Important information

- Complete maintenance checks weekly including bolt connections and tightness.
- Heavy loads carried near feet
- Overhanging loads should conform to relevant state laws
- Check tie down strap tension every 50klm as loads can shift
- Specialised equipment carriers such as ladder slides should be used
- Ensure your roof racks, ladder rails and or load does not inhibit the tailgate lifting on vehicles manufactured with these doors
- Check car park heights before entering
- Keep load under the maximum capacity
- Use non stretch fastening straps
- Remove roof racks prior to using an automatic car wash

Note: The handling characteristics of a vehicle will change when a carrier system is fitted. Driving technique such as speed reduction, cornering techniques and braking distances should be altered to allow for these changes.

Kit Inclusions

Item	Part	Qty
1	Right Track - X01	1
2	Left Track - X02	1
3	FL/RR End Cap - X03	2
4	FR/RL End Cap - X04	2
5	Rivet - F022	14

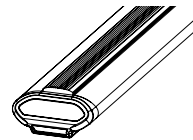


Tools Required

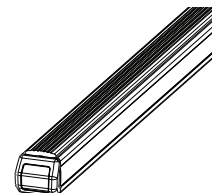
- 1 - Tape Measure.
- 2 - Drill and 5mm bit.
- 3 - Butyl Mastic Sealant.
- 4 - Cold Galvanising Paint.
- 5 - Vacuum.
- 6 - Drill Guide.
- 7 - Marker.
- 8 - Cutters.
- 9 - Rivet Gun.
- 10 - Dremel.
- 11 - Sikaflex.

Required kits (as separate):

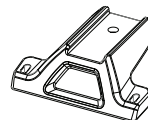
- Crossbar 1250mm
- Crossbar Mount kit



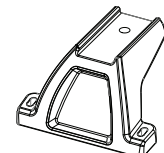
Or



Or



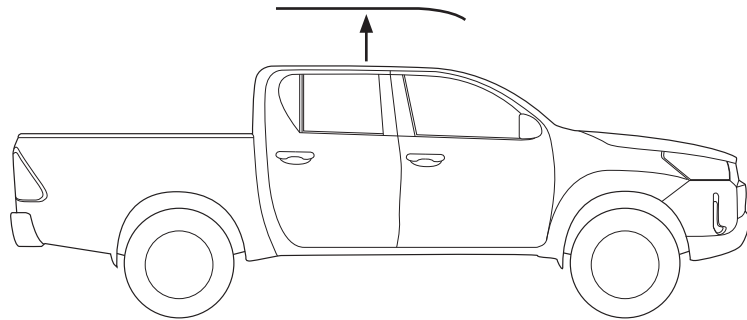
45mm Mount



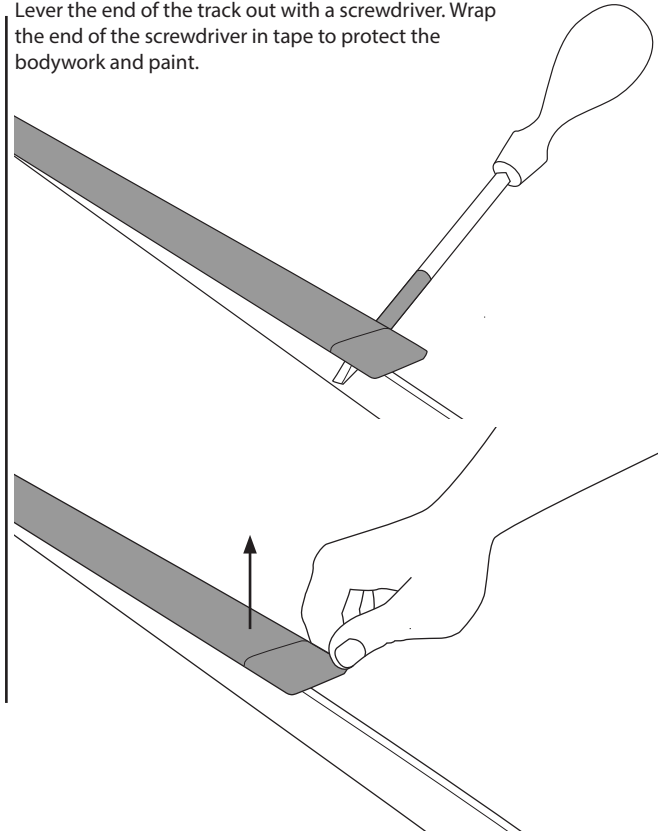
80mm Mount

Step 1

Carefully pry up the roof trim and remove.

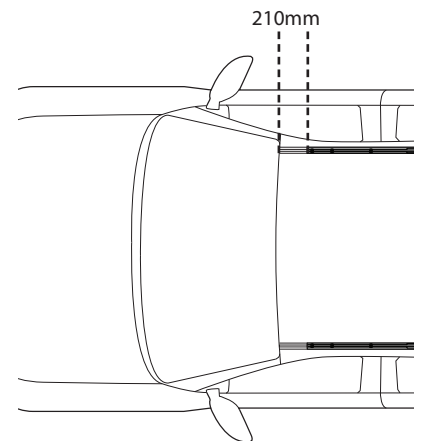
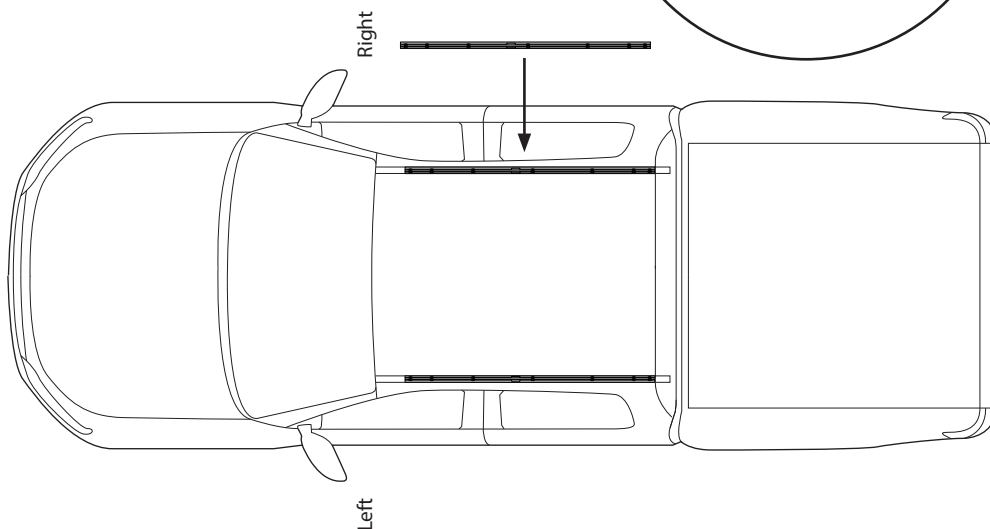
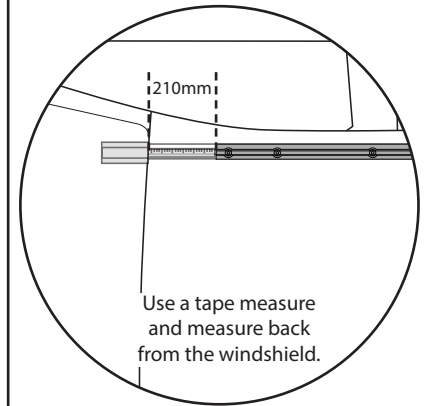
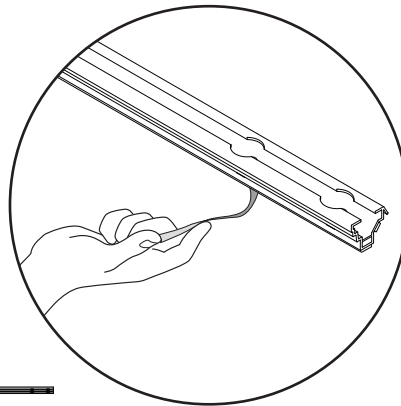
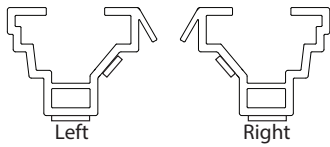


Lever the end of the track out with a screwdriver. Wrap the end of the screwdriver in tape to protect the bodywork and paint.



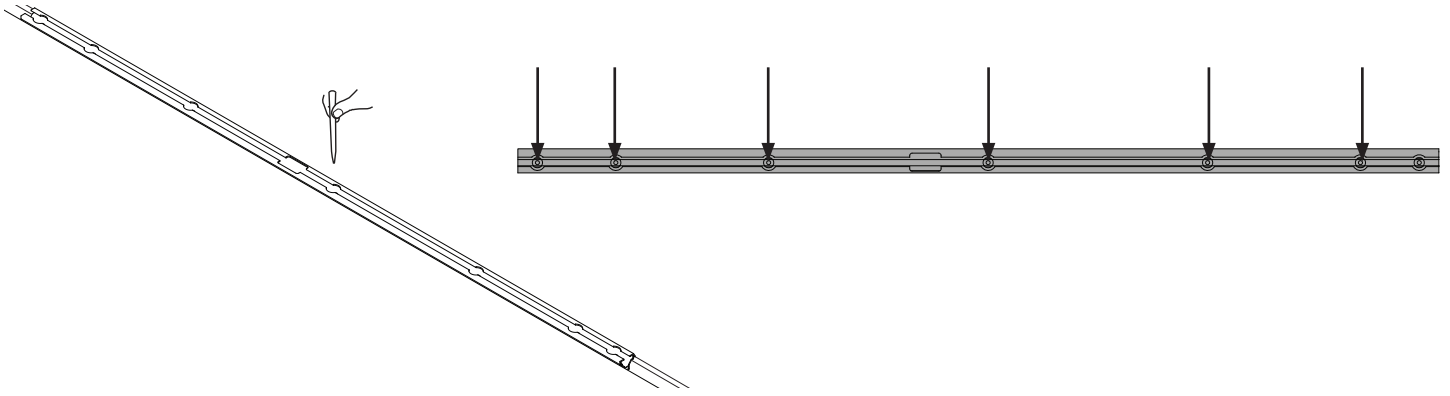
Step 2

Remove the protective tape from the foam on both tracks.
Place the tracks into the roof ditches. Position the tracks 210mm back from the windshield.



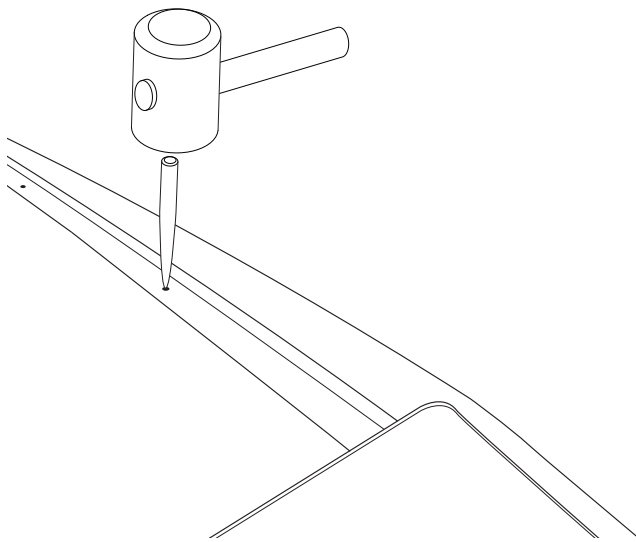
Step 3

Mark all the holes in the track onto the ditch below. **Use assistance to hold the tracks firmly in position.** Remove tracks when complete.

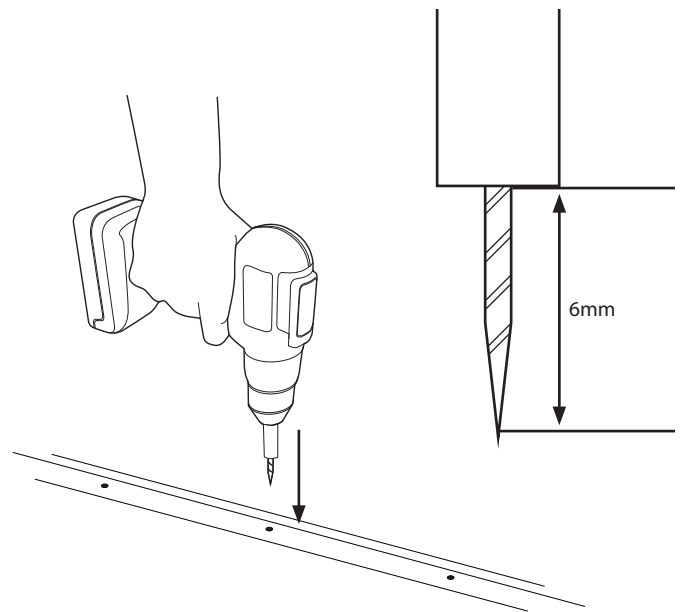


Step 4

- 1 - Use a centre punch and prepare all marks made for drilling.
- 2 - Using a 5mm bit with a guide set to 6mm, drill out all marks.

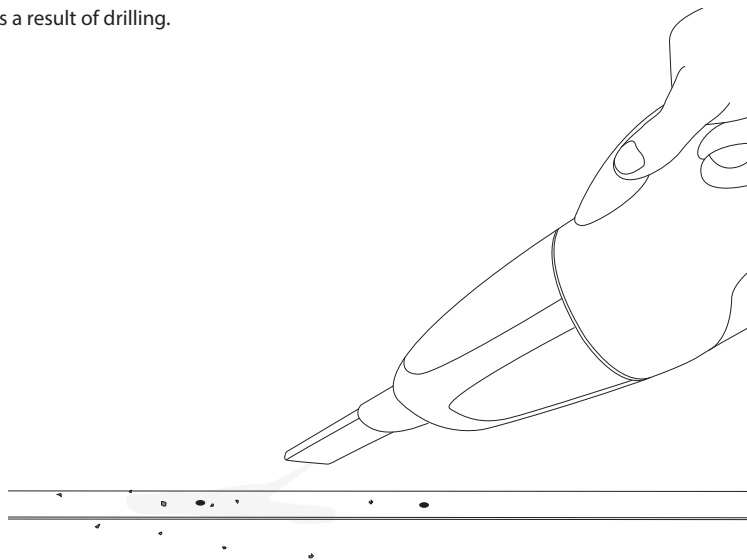


NOTE: The fourth hole from the rear is above the airbags, use caution when drilling here.



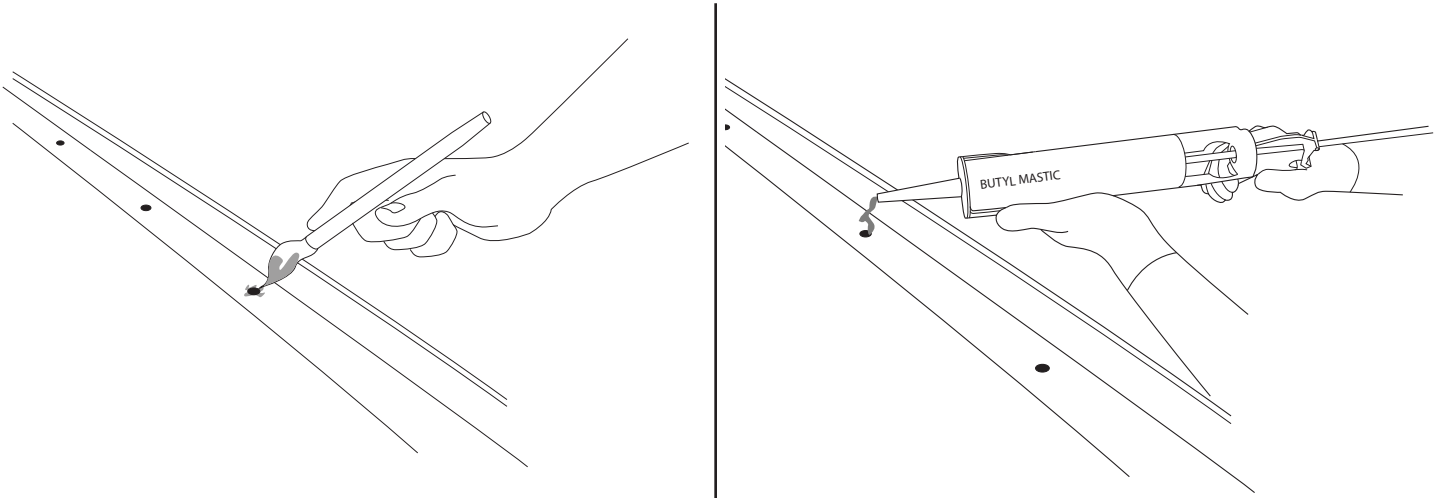
Step 5

Vacuum any material from the roof as a result of drilling.



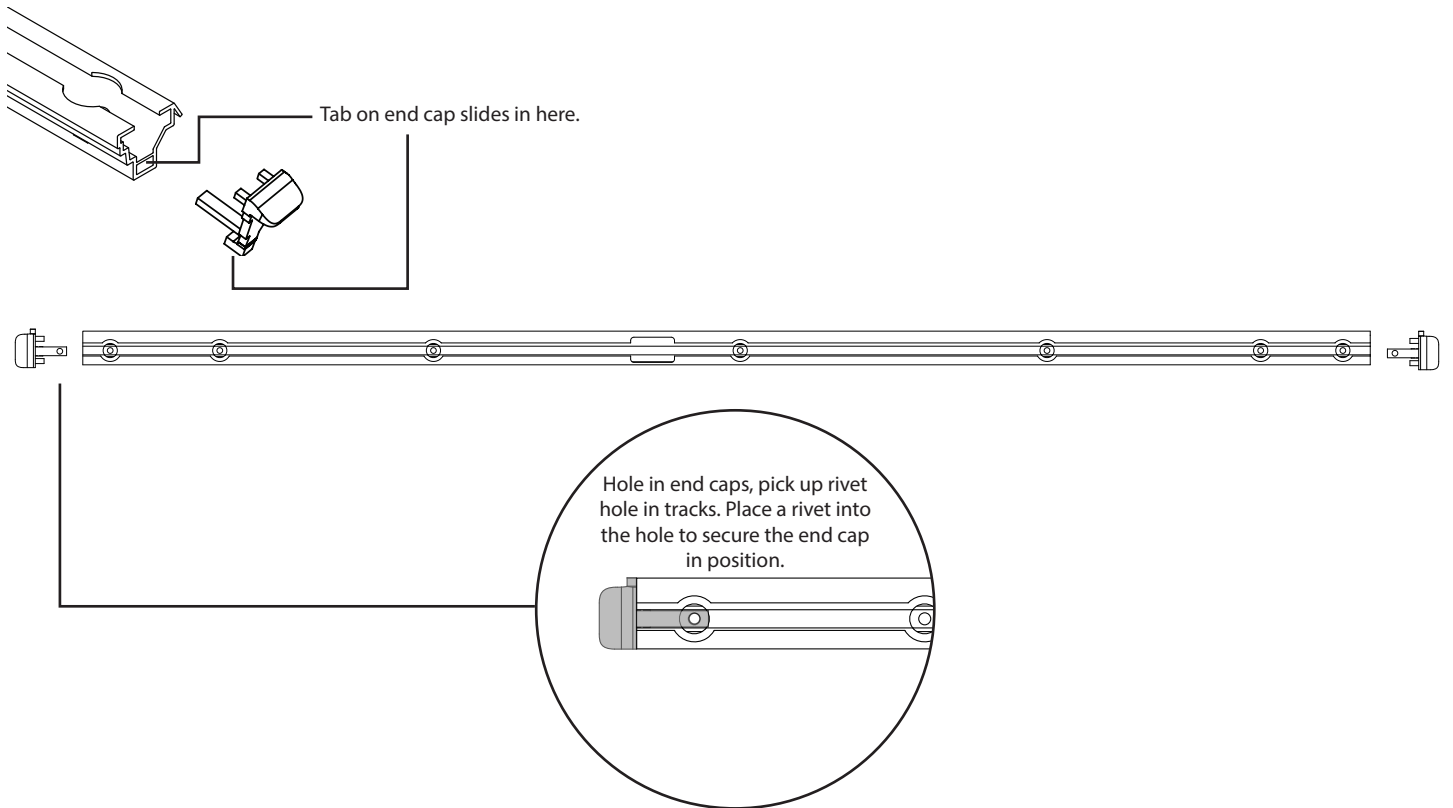
Step 6

- 1 - Apply cold galvanising paint to all the drilled holes. Allow 15min to dry.
- 2 - Apply butyl mastic to each hole.



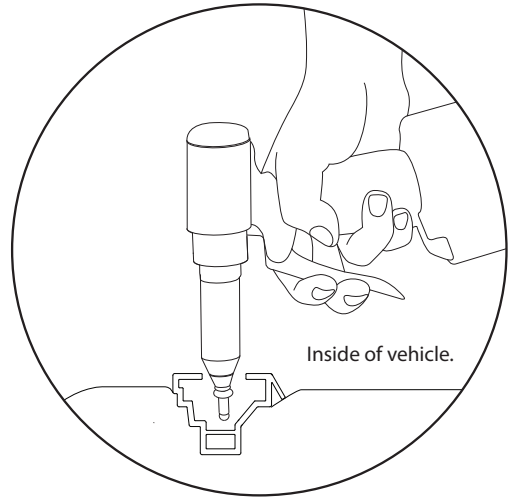
Step 7

Insert the end caps into the tracks.

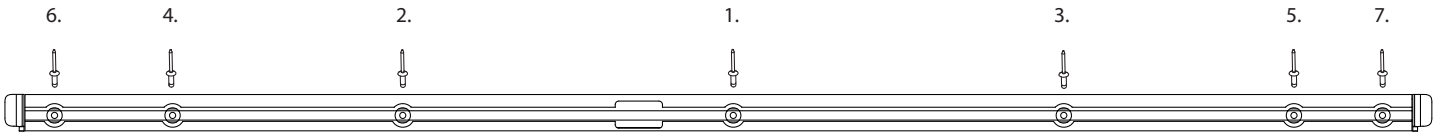


Step 8

Place the tracks into the position. Using a rivet gun, fix the track in place in the order shown.



Rivet in number sequence 1-7.



Note

If required, the roof trim can be cut to length to fit either side of the installed tracks.

1 - Measure the ditch front and rear, then cut the trim to suit.

2 - Using sikaflex, secure the cut trim either side of the installed tracks.

