



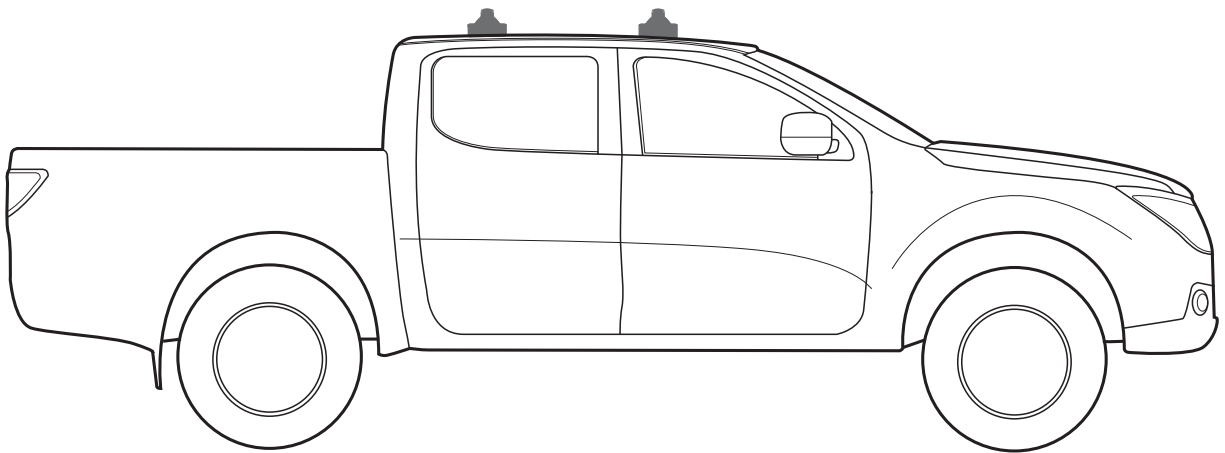
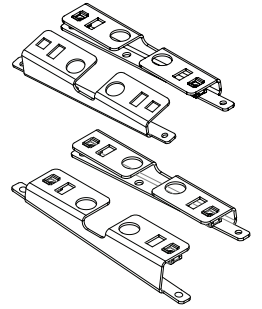
'Tradie Tuff'

COMMERCIAL ROOF RACKS

FORD RANGER CREW CAB, 11 - on

FIXED MOUNT

PART NUMBER: VAS.RC1142, VAS.RA1142, VAS.RC1143, VAS.RA1143, VAS.RC1074, VAS.RA1074, VAS.RC1075, VAS.RA1075, VAS.RC1008, VAS.RA1008, VAS.RC1070, VAS.RA1070.



Note:

- PLEASE READ INSTRUCTIONS AND CHECK CONTENT PRIOR TO INSTALLING.
- PLACE INSTRUCTIONS IN VEHICLES GLOVE COMPARTMENT AFTER INSTALLING.



2 Bar maximum capacity: 100kg

Tested to AS/NZS 1235-2000 ADR standards

- Please check your vehicle's manual for vehicle load capacity (please do not exceed the lowest load rating) and please download and read our Load Rating guide which can be found on our website vas.com.au.
- Load rating is based on driving on sealed roads to road conditions and includes weight of the roof rack system.

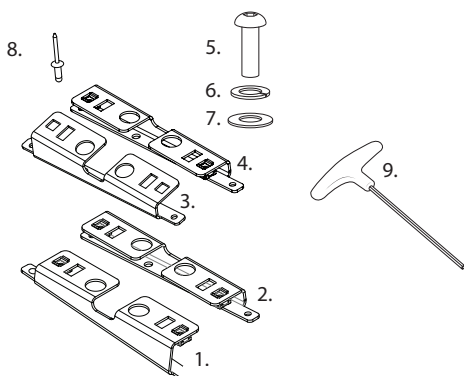
Important information

- Complete maintenance checks weekly including bolt connections and tightness.
- Heavy loads carried near feet
- Overhanging loads should conform to relevant state laws
- Check tie down strap tension every 50klm as loads can shift
- Specialised equipment carriers such as ladder slides should be used
- Ensure your roof racks, ladder rails and or load does not inhibit the tailgate lifting on vehicles manufactured with these doors
- Check car park heights before entering
- Keep load under the maximum capacity
- Use non stretch fastening straps
- Remove roof racks prior to using an automatic car wash

Note: The handling characteristics of a vehicle will change when a carrier system is fitted. Driving technique such as speed reduction, cornering techniques and braking distances should be altered to allow for these changes.

Kit Inclusions

Item	Part	F	R	2 Bar
1	Front Right Bracket - C209R	1	0	1
2	Front Left Bracket - C209L	1	0	1
3	Rear Left Bracket - C242L	0	1	1
4	Rear Right Bracket - C242R	0	1	1
5	M6 x 30mm Screw - F008	4	4	8
6	M6 Spring Washer - F012	4	4	8
7	M6 x 16mm Flat Washer - F011	4	4	8
8	Rivet - F022	6	6	12
9	4mm Allen Tool - C028	1	1	1

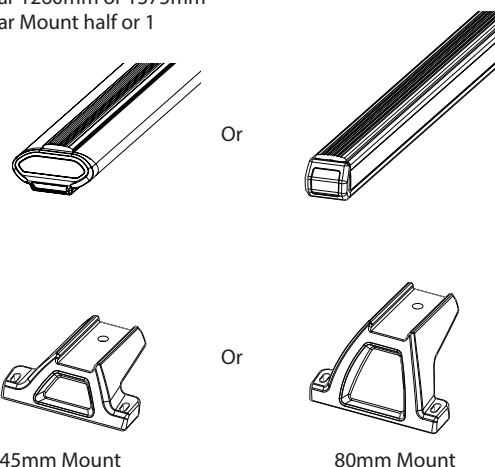


Tools Required

- 1 - Tape Measure.
- 2 - Drill and 6mm bit.
- 3 - Butyl Mastic Sealant.
- 4 - Cold Galvanising Paint.
- 5 - Vacuum.
- 6 - Drill Guide.
- 7 - Marker.
- 8 - Masking Tape.
- 9 - Dremel.
- 10 - Knife.

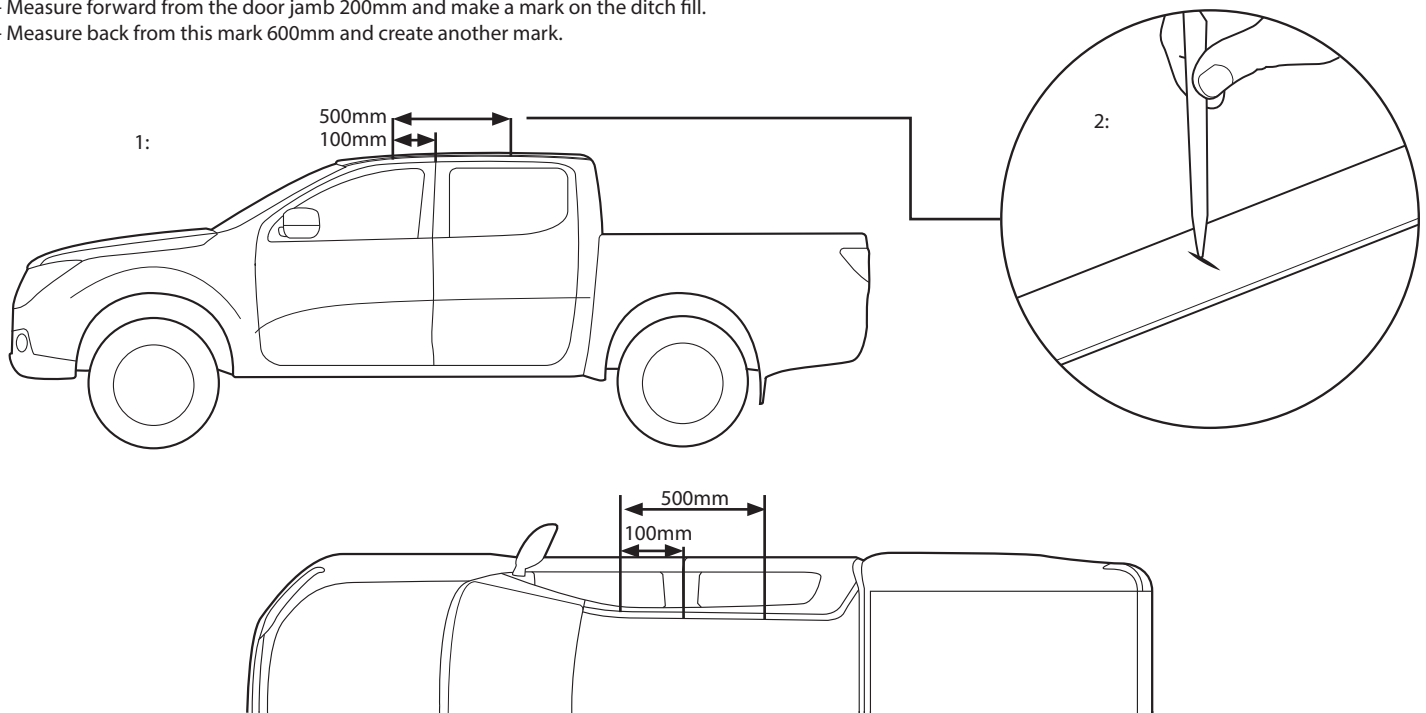
Required kits (as separate):

Crossbar 1260mm or 1375mm
Crossbar Mount half or 1



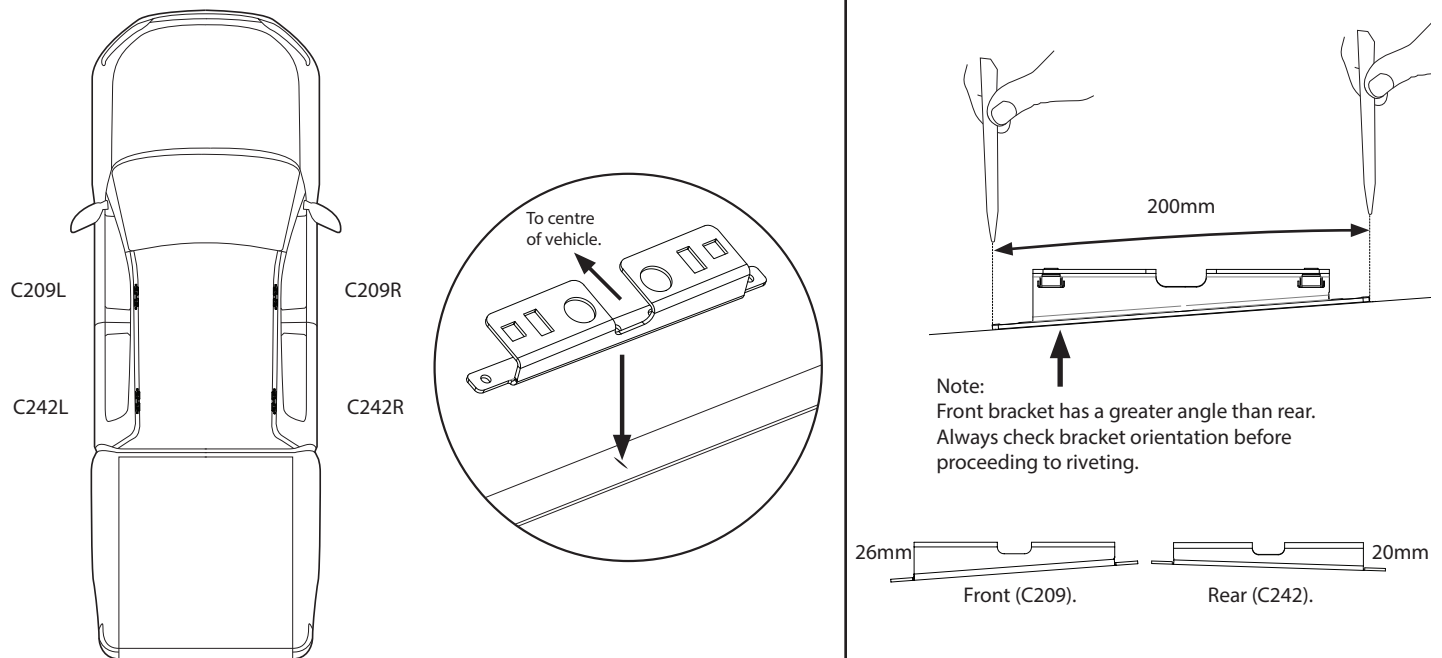
Step 1

- 1 - Measure forward from the door jamb 200mm and make a mark on the ditch fill.
- 2 - Measure back from this mark 600mm and create another mark.



Step 2

- Centre the correct brackets over the marks made in the last step.
Mark the width of the brackets onto the ditch fill.



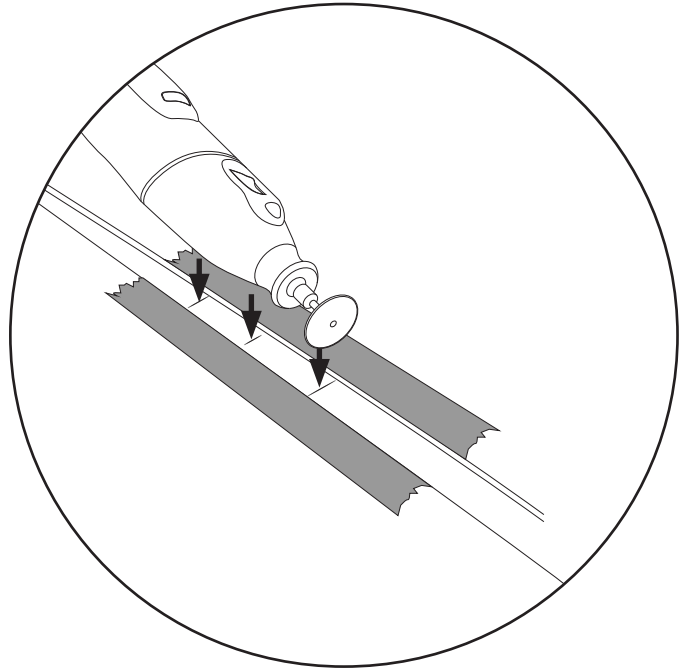
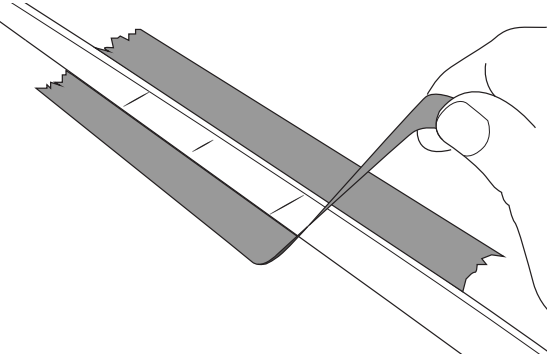
Step 3

1 - Using making tape, line the outsides of the ditch, either side of where the brackets will be installed. The tape should extend 50-100mm beyond the length of the brackets.

2 - With a few layers of tape either side, carefully cut through the ditch fill along the bracket width marks using a dremel.

Note - There is a metal line that runs through the ditch fill. Take care when cutting.

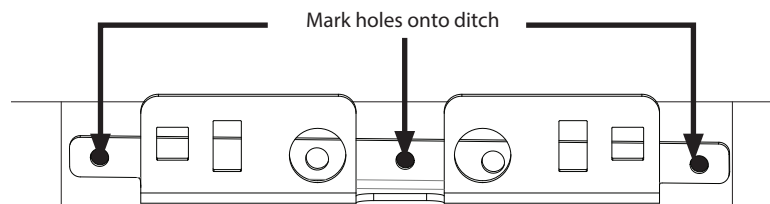
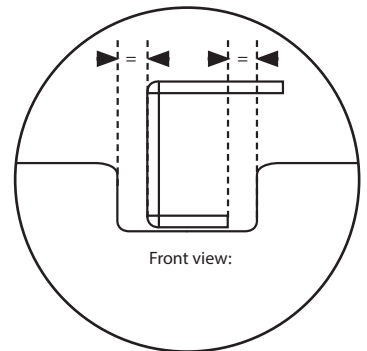
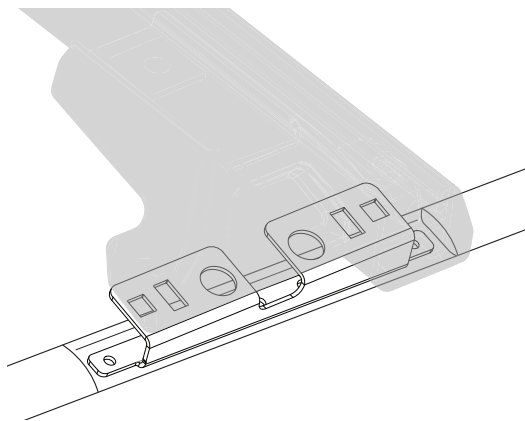
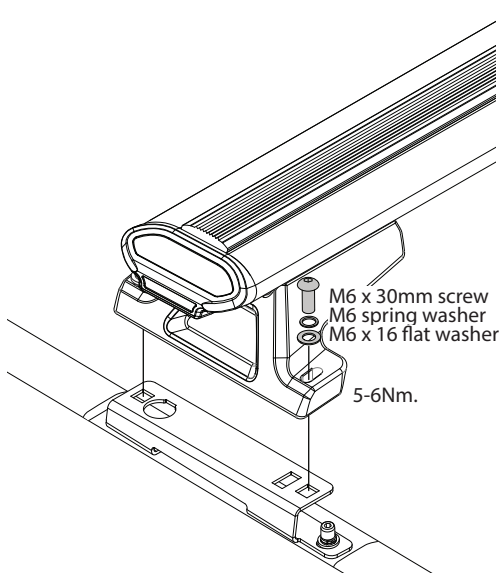
1:



Step 4

1 - Assemble the legs and crossbars (as per corresponding instructions). Fit the assembly to the brackets (finger tight). This will ensure brackets are installed in correct position.

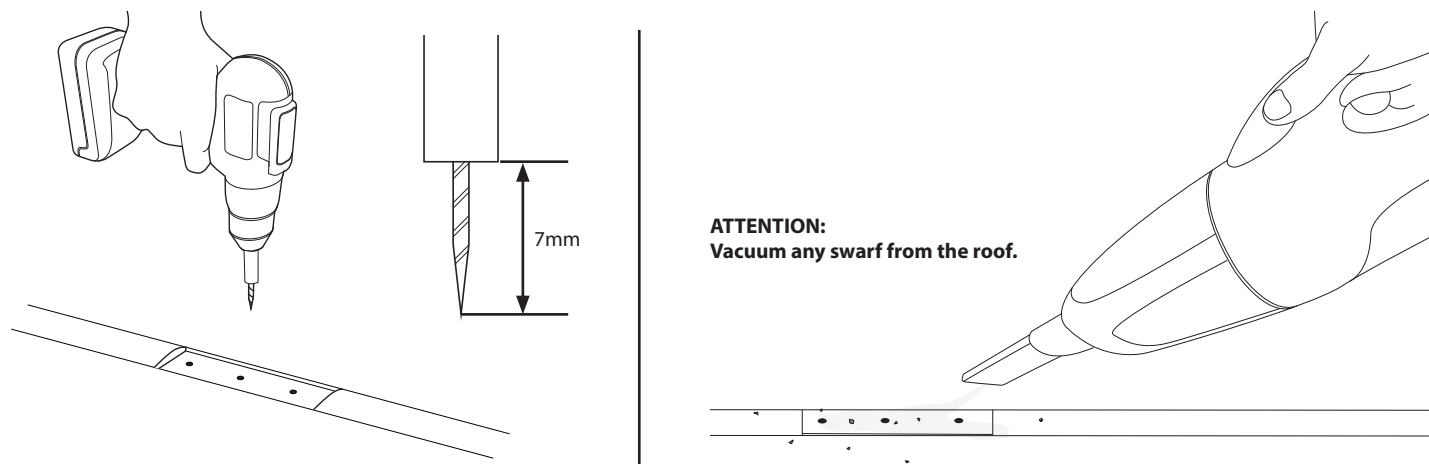
2 - Centre the correct brackets over the marks made in the last step. Mark the rivet holes in each bracket onto the ditch.



Top view:

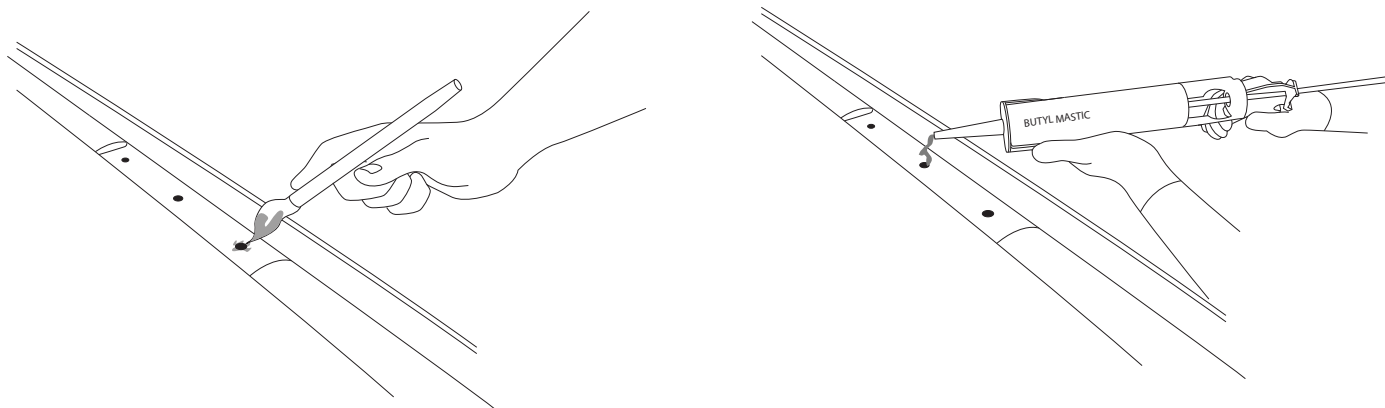
Step 5

Remove the brackets, use a 6mm drill bit, with a drill depth guide set to 7mm and drill through each mark.



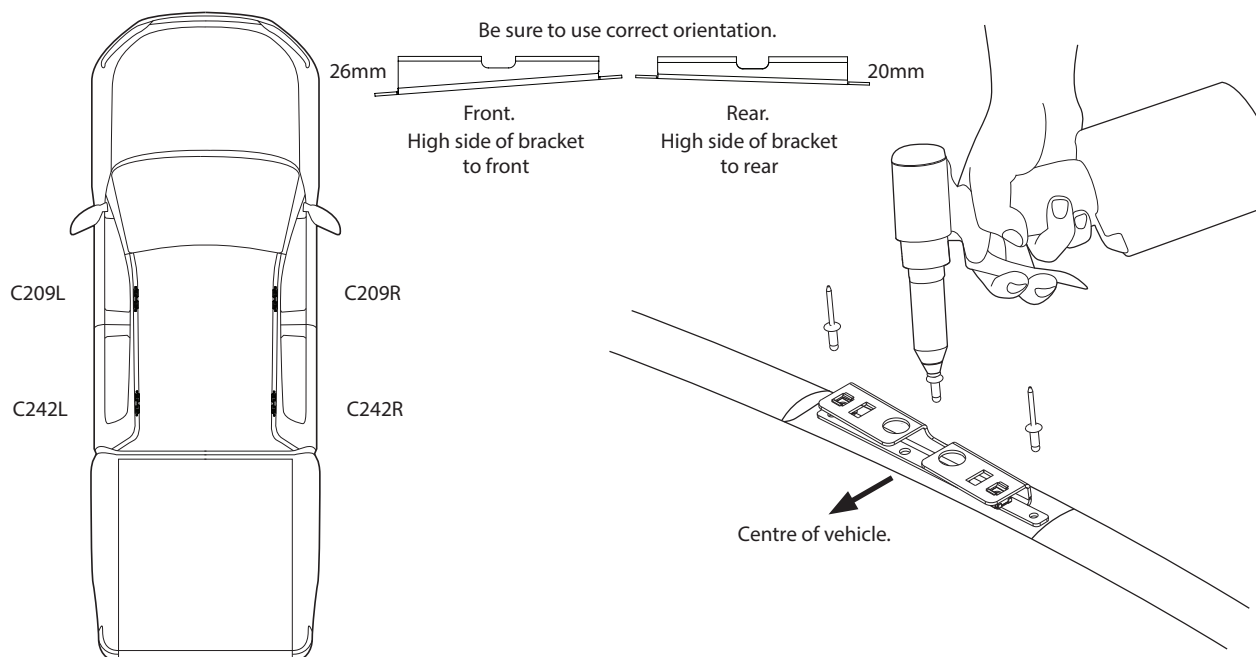
Step 6

Apply cold galvanising paint to the holes drilled. Allow 15min to dry and then apply butyl mastic in and around the holes.



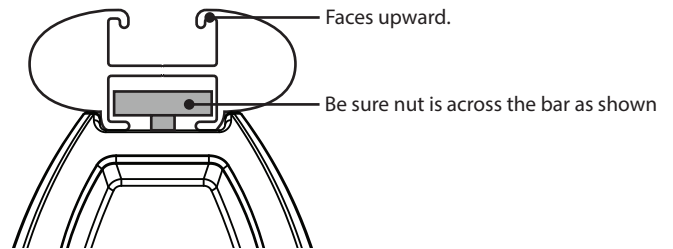
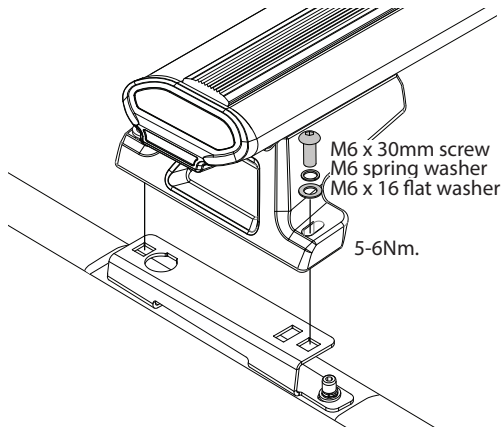
Step 7

Place the brackets back onto the vehicle and fix in place with a pneumatic rivet gun.



Step 8

Complete crossbar mount kits as specified in their instructions. Place the crossbars onto the installed brackets in the roof. Fix in place with the M6 hardware provided and tighten with the allen key provided.



NOTE

ATTENTION:

**Thoroughly check all fasteners are secure before driving away. Heights for standard spec vehicle.
Always check your vehicles height measurements.**

