

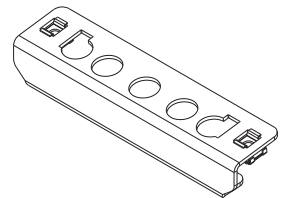


*'Tradie Tuff'*

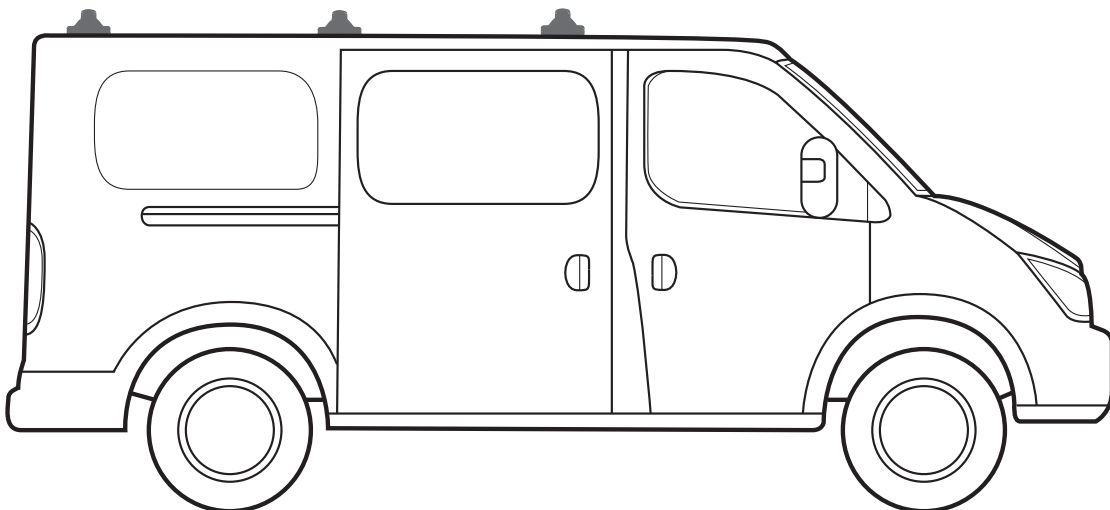
# COMMERCIAL ROOF RACKS

**LDV** V80, SWB & LOW ROOF 01/2013

**FIXED MOUNT**



PART NUMBER: VAS.RC1068, VAS.RA1068, VAS.RC1013, VAS.RA1013, VAS.RC1011, VAS.RA1011.



**Note:**

- PLEASE READ INSTRUCTIONS AND CHECK CONTENT PRIOR TO INSTALLING.
- PLACE INSTRUCTIONS IN VEHICLES GLOVE COMPARTMENT AFTER INSTALLING.



3 Bar maximum capacity: 100kg

Tested to AS/NZS 1235-200 ADR standards

- Please check your vehicle's manual for vehicle load capacity (please do not exceed the lowest load rating) and please download and read our Load Rating guide which can be found on our website [vas.com.au](http://vas.com.au).
- Load rating is based on driving on sealed roads to road conditions and includes weight of roof rack system.

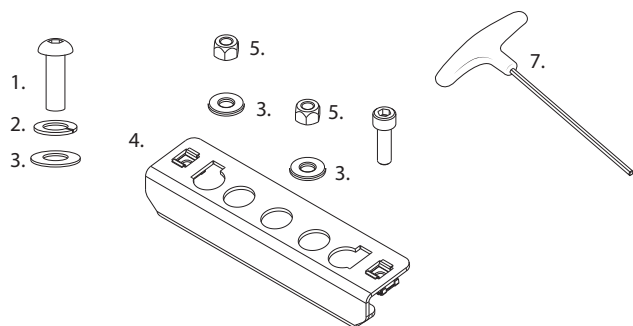
# Important information

- Complete maintenance checks weekly including bolt connections and tightness.
- Heavy loads carried near feet
- Overhanging loads should conform to relevant state laws
- Check tie down strap tension every 50klm as loads can shift
- Specialised equipment carriers such as ladder slides should be used
- Ensure your roof racks, ladder rails and or load does not inhibit the tailgate lifting on vehicles manufactured with these doors
- Check car park heights before entering
- Keep load under the maximum capacity
- Use non stretch fastening straps
- Remove roof racks prior to using an automatic car wash

**Note:** The handling characteristics of a vehicle will change when a carrier system is fitted. Driving technique such as speed reduction, cornering techniques and braking distances should be altered to allow for these changes.

## Kit Inclusions

Item	Part	1 Bar	2 Bar	3 Bar
1	M6 x 30mm Button Head Screw - F008	4	8	12
2	M6 Spring Washer - F012	4	8	12
3	M6 x 16mm Flat Washer - F011	12	24	36
4	Common Bracket - C087	2	4	6
5	M6 Nyloc Nut - F052	4	8	12
6	M6 x 20mm Button Head Screw - F006	4	8	12
8	4mm Allen Tool - C028	1	1	1

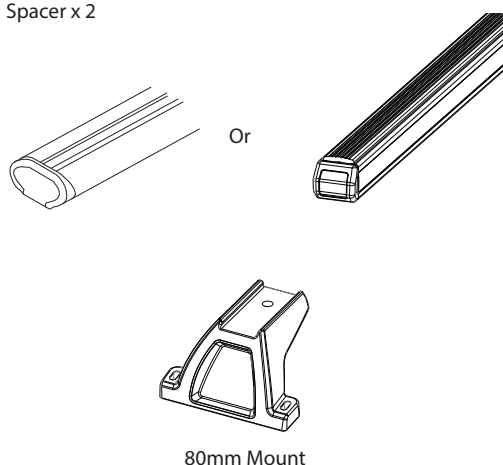


## Tools Required

- 1 - Power Drill.
- 2 - Drill Depth Guide.
- 3 - Cold Galvanising Paint.
- 4 - Butyl Mastic.
- 5 - Marker.
- 6 - Tape.
- 7 - Vacuum.
- 8 - 6.5mm Drill Bit.
- 9 - 10mm Socket Wrench.
- 10 - 4mm Allen Tool (provided).

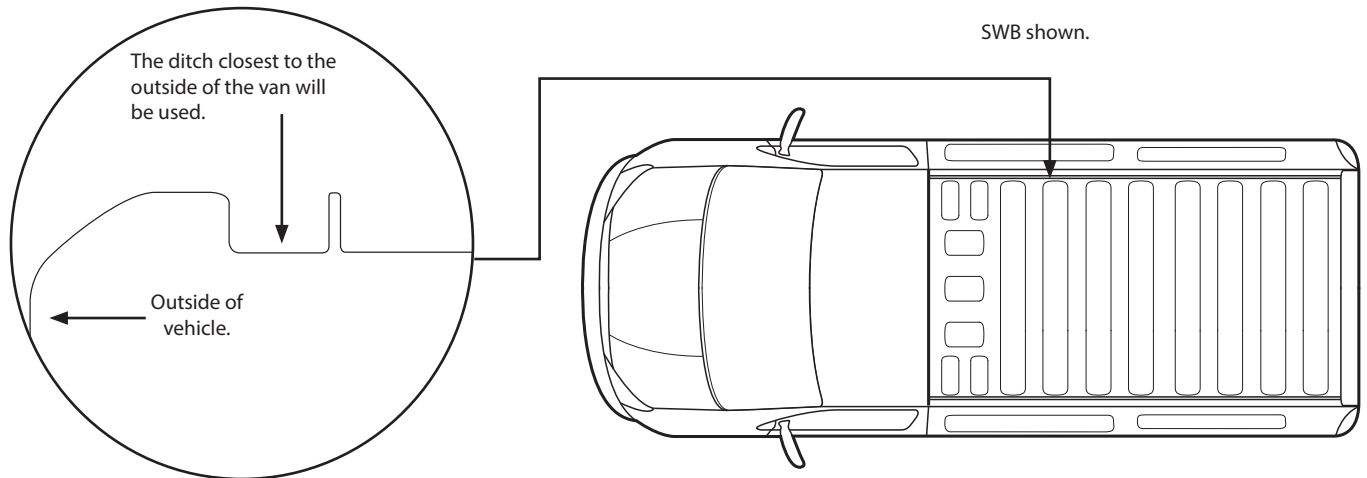
### Required kits (as separate):

Crossbar x3 1650mm  
Crossbar Mount Kit x3  
10mm Spacer x 2



## Step 1

Move to the roof ditch of your vehicle, making note of the correct ditch that will be used during the installation.



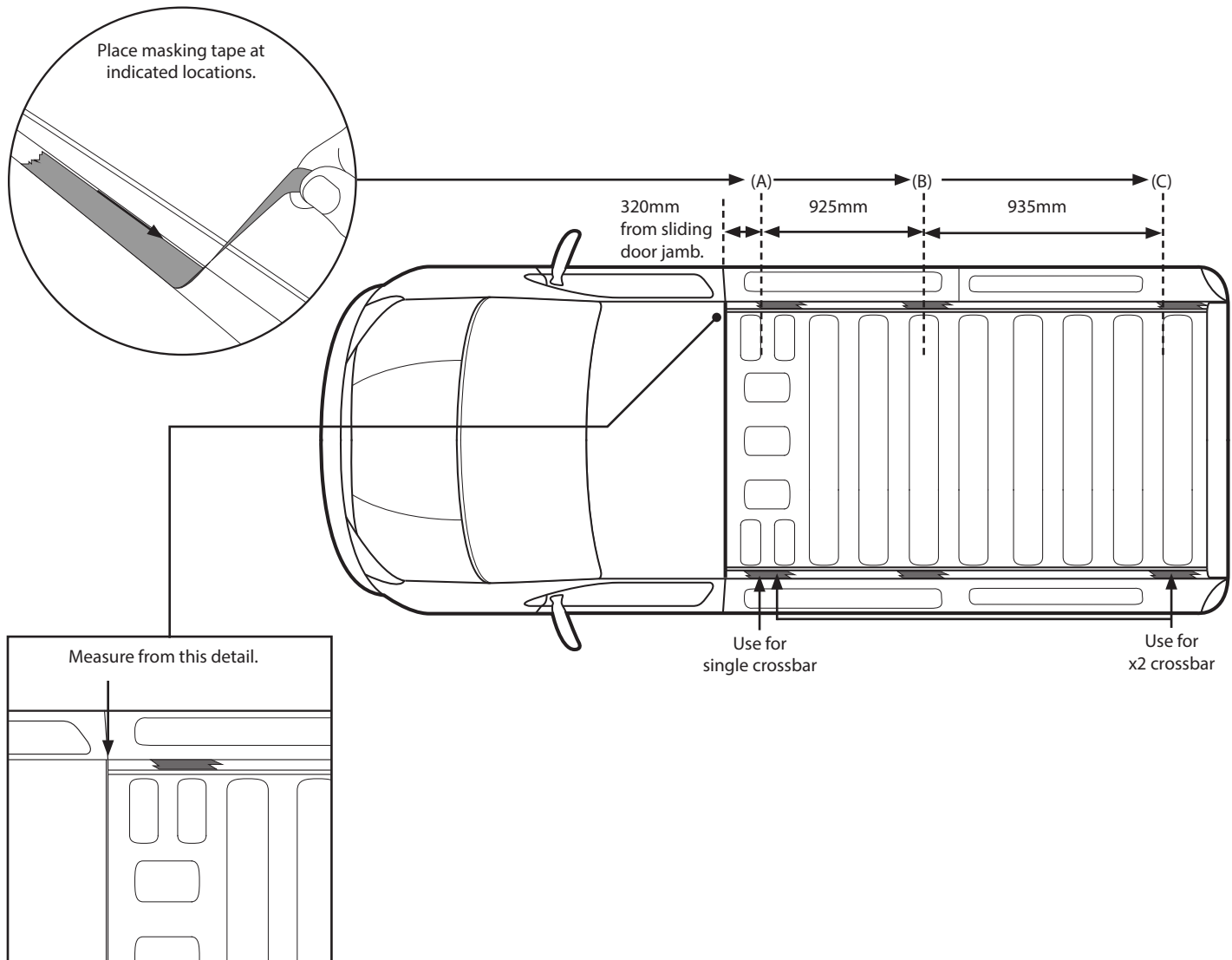
## Step 2

With the correct working space identified, place a 200mm length of masking tape at the measurements shown.

A - Locate the front most small roof detail. Place a 200mm length of masking tape in the ditch, in line with the rear of the detail.

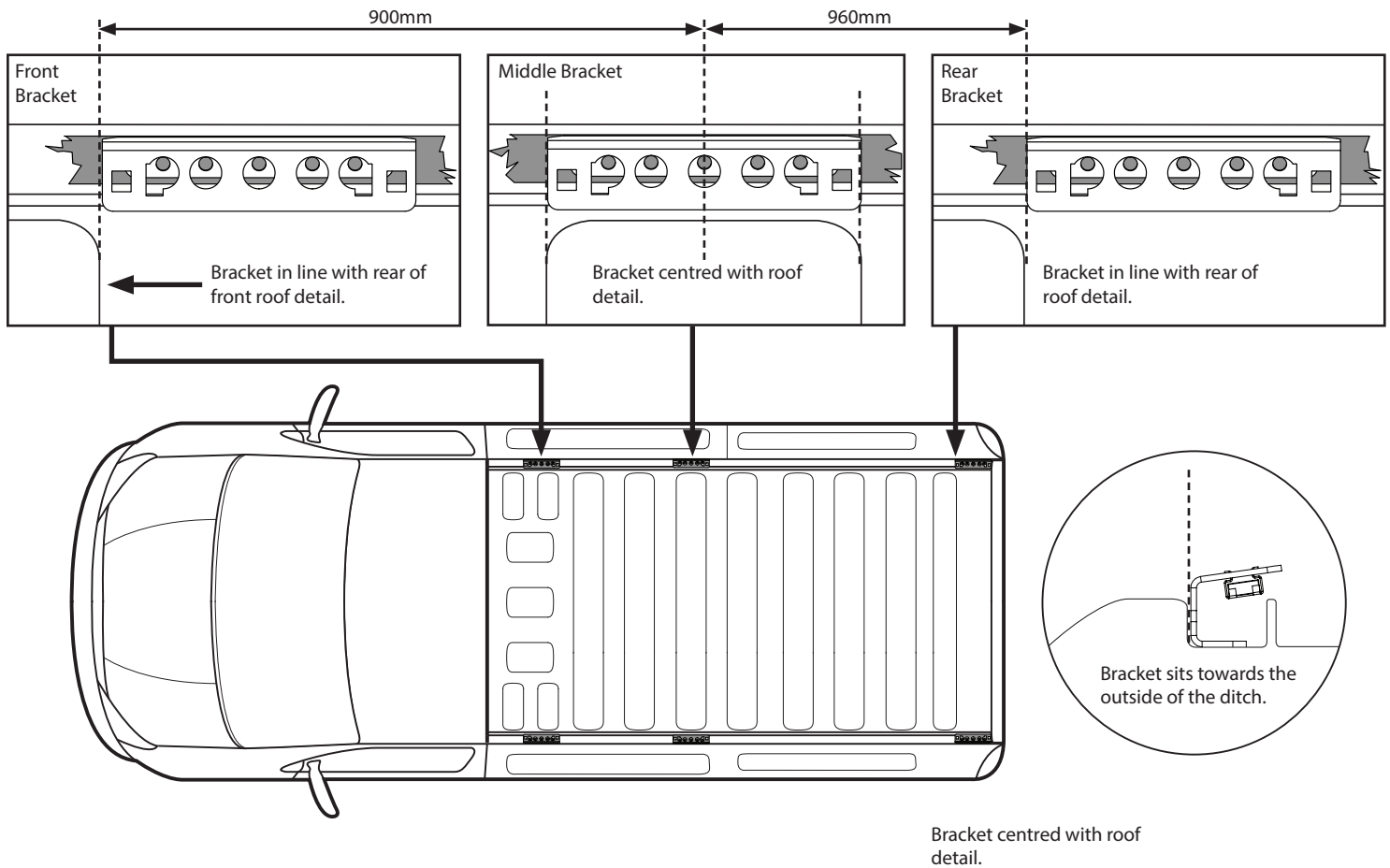
B - A 200mm length of tape is to be placed in the ditch, centred with the 3rd large roof detail from the front.

C - A 200mm length of tape is to be placed in the ditch, in line with the front of the rear most roof detail.



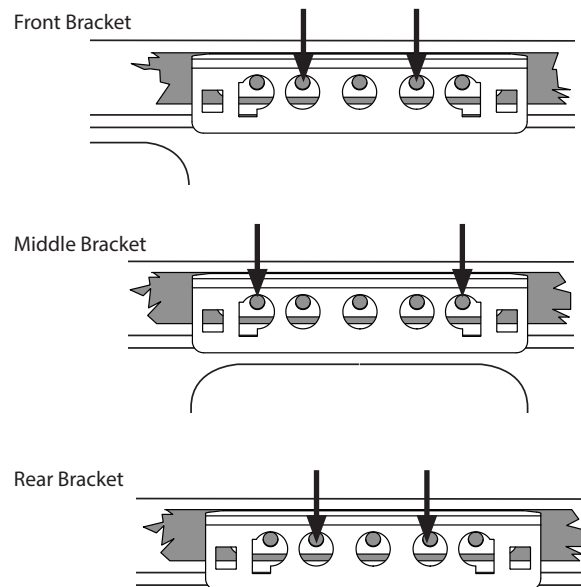
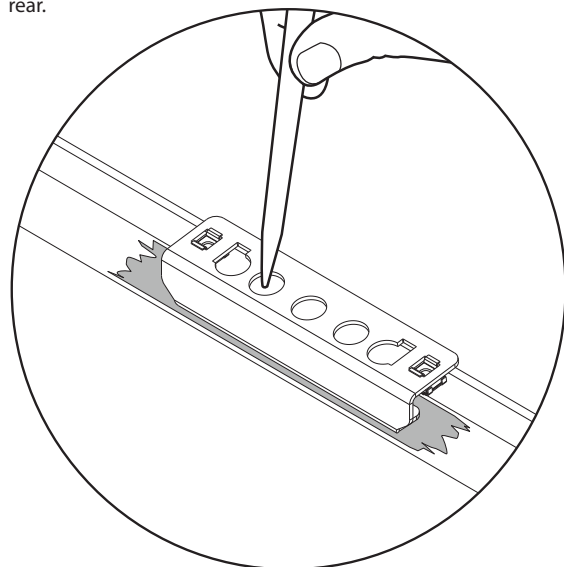
### Step 3

Place the brackets into the ditch at these points.



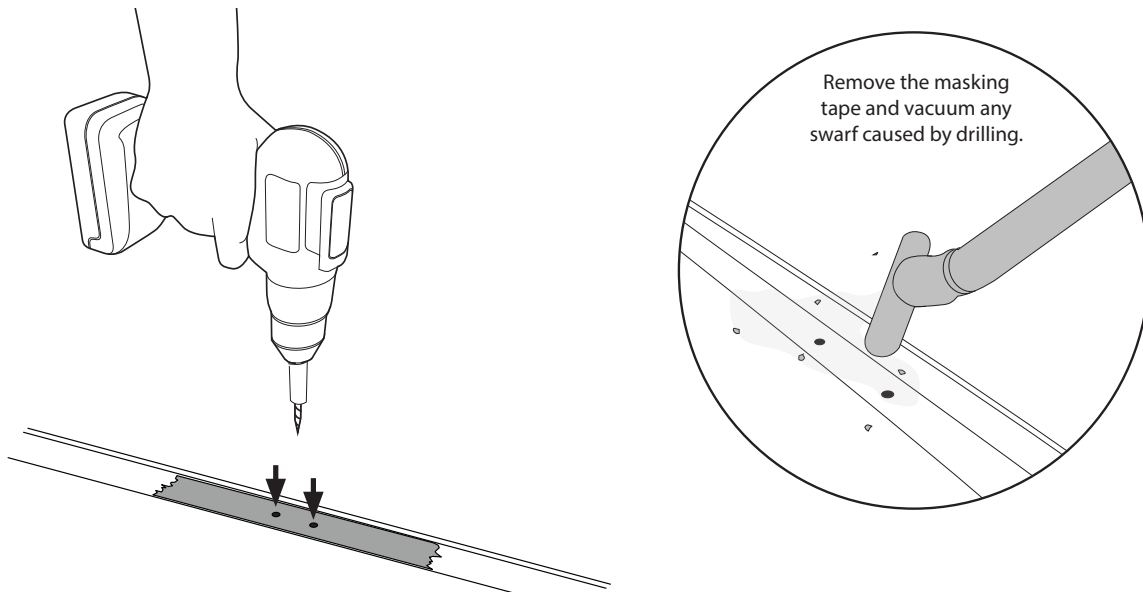
### Step 4

Mark the two holes indicated below onto the masking tape. Note: The middle bracket used different mounts holes than front and rear.



#### Step 5

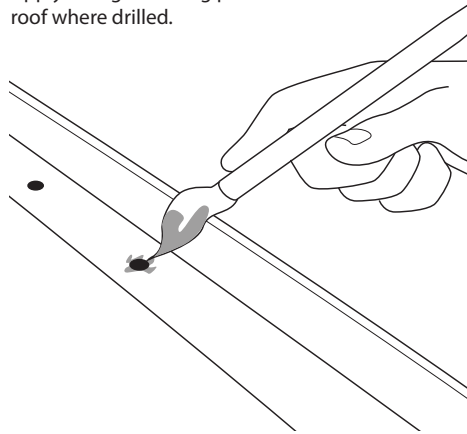
With a 6.5mm drill bit open out all the points made in the roof in step 4. **A drill depth guide set to 5mm must be used to protect the interior of your vehicle.**



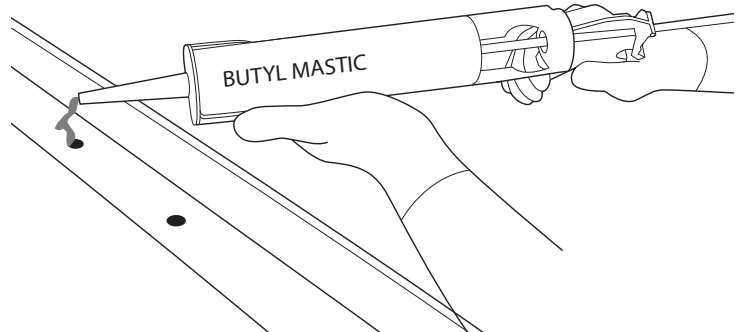
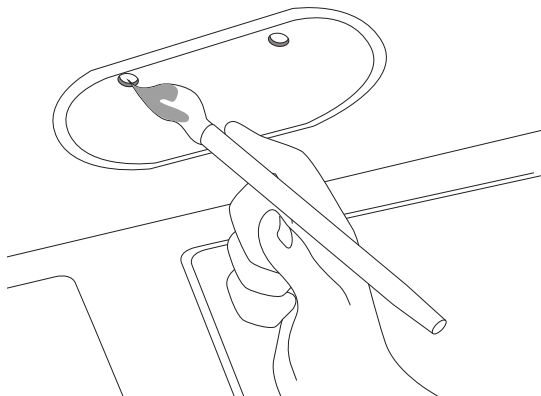
#### Step 6

Apply cold galvanising paint to the holes drilled. Allow time to dry. Using butyl mastic, apply a water seal to the holes drilled.

Apply cold galvanising paint to the roof where drilled.



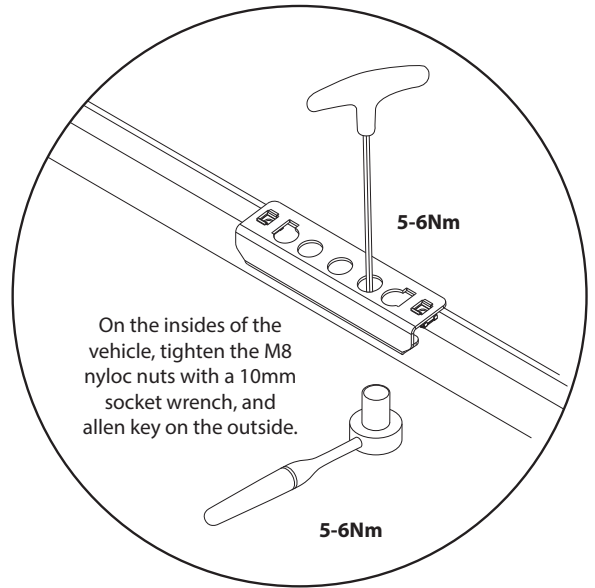
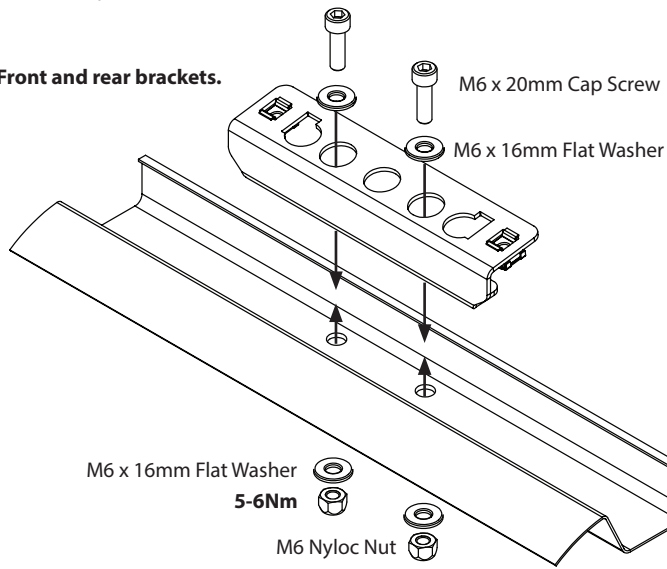
Apply cold galvanising paint to the underside of the roof where drilled.



## Step 7

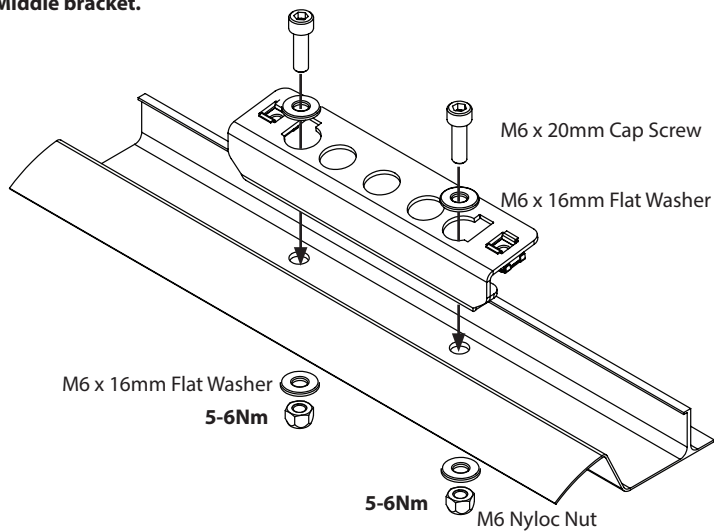
With assistance, pass the M6 hardware through the vehicle (front and rear). Attach M6 nyloc nuts and washers onto the exposed threads within the vehicle.

### Front and rear brackets.

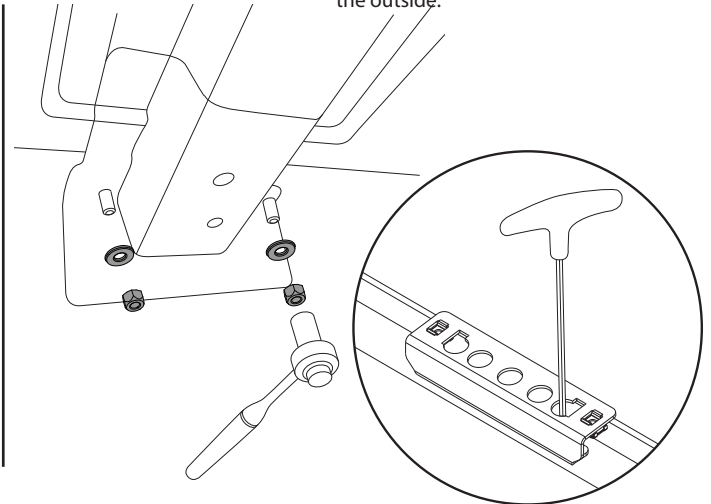


For the middle mount point, place M6 cap screws and flat washers through the brackets and the roof. Attach M6 nyloc nuts and washers onto the exposed threads within the vehicle.

### Middle bracket.

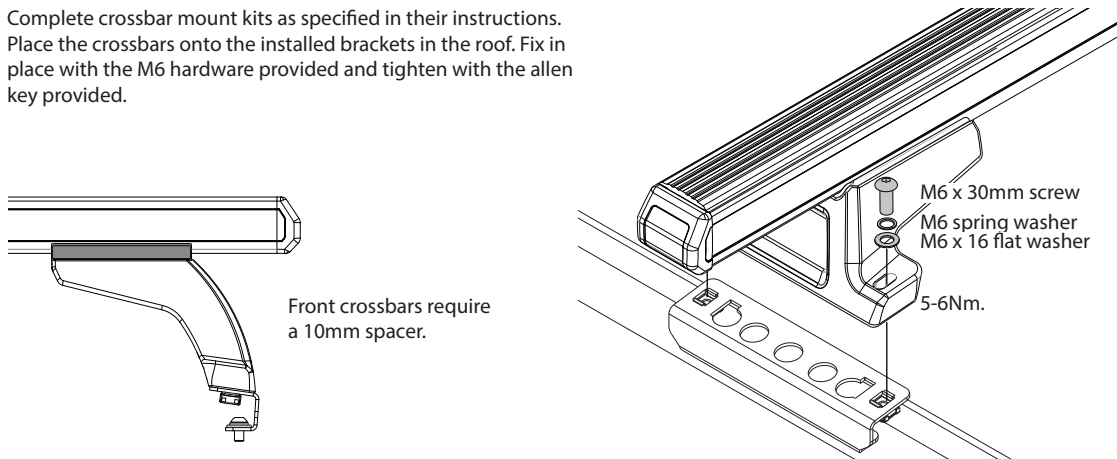


On the insides of the vehicle, tighten the M8 nyloc nuts with a 10mm socket wrench and allen key on the outside.

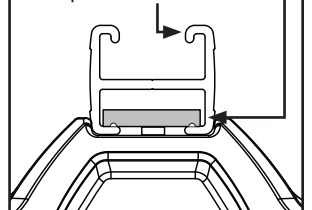


## Step 8

Complete crossbar mount kits as specified in their instructions. Place the crossbars onto the installed brackets in the roof. Fix in place with the M6 hardware provided and tighten with the allen key provided.



Note: Channel nut is situated across the bar. Be aware of crossbar orientation. Curved edge to the top as seen.



NOTE

**ATTENTION:**

Thoroughly check all fasteners are secure before driving away. Heights are for standard unloaded vehicles. Always check your specific vehicles height.

