

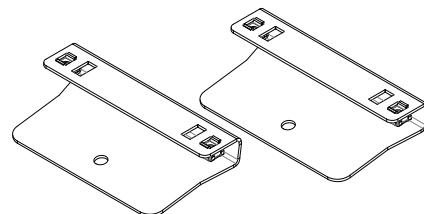


'Tradie Tuff'

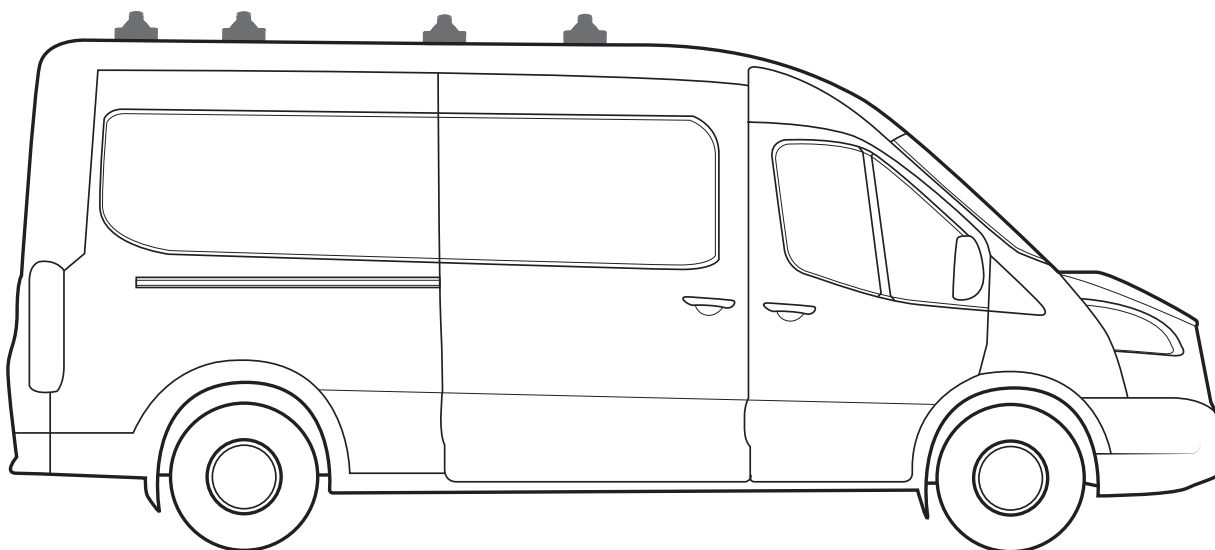
COMMERCIAL ROOF RACKS

FORD TRANSIT, MID & HIGH 01/2014 - ON

FIXED MOUNT



PART NUMBER: VAS.RC1060, VAS.RA1060, VAS.RC1045, VAS.RA1045, VAS.RC1058, VAS.RA1058, VAS.RC1043, VAS.RA1043, VAS.RC1067, VAS.RA1067, VAS.RC1049, VAS.RA1049, VAS.RC1065, VAS.RA1065, VAS.RC1061, VAS.RA1061.



Note:

- PLEASE READ INSTRUCTIONS AND CHECK CONTENT PRIOR TO INSTALLING.
- PLACE INSTRUCTIONS IN VEHICLES GLOVE COMPARTMENT AFTER INSTALLING.



3 Bar maximum capacity: 100kg

Tested to AS/NZS 1235-200 ADR standards

- Please check your vehicle's manual for vehicle load capacity (please do not exceed the lowest load rating) and please download and read our Load Rating guide which can be found on our website vas.com.au.
- Load rating is based on driving on sealed roads to road conditions and includes weight of roof rack system.

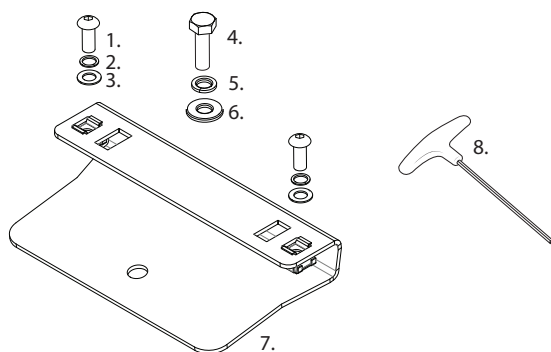
Important information

- Complete maintenance checks weekly including bolt connections and tightness.
- Heavy loads carried near feet
- Overhanging loads should conform to relevant state laws
- Check tie down strap tension every 50klm as loads can shift
- Specialised equipment carriers such as ladder slides should be used
- Ensure your roof racks, ladder rails and or load does not inhibit the tailgate lifting on vehicles manufactured with these doors
- Check car park heights before entering
- Keep load under the maximum capacity
- Use non stretch fastening straps
- Remove roof racks prior to using an automatic car wash

Note: The handling characteristics of a vehicle will change when a carrier system is fitted. Driving technique such as speed reduction, cornering techniques and braking distances should be altered to allow for these changes.

Kit Inclusions

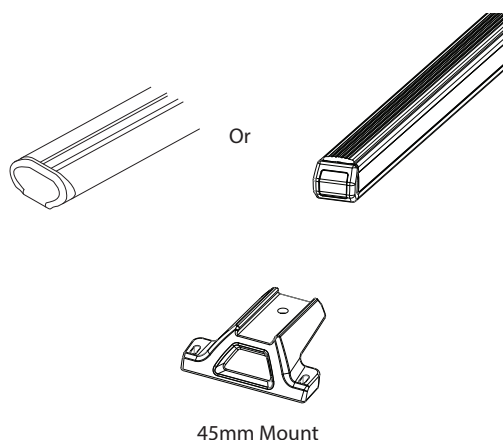
Item	Part	2 Bar	4 Bar
1	M6 x 30mm Button Head Screw - F008	8	16
2	M6 Spring Washer - F012	8	16
3	M6 x 16mm Flat Washer - F011	8	16
4	M8 x 25mm Hex Head screw - F015	4	8
5	M8 Spring Washer - F018	4	8
6	M8 x 17mm Flat Washer - F017	4	8
7	Bracket - C088	4	8
8	4mm Allen Tool - C028	1	1



Tools Required

Required kits (as separate):

Crossbar 1800mm x3 or 4
Crossbar Mount Kit x1 or 2

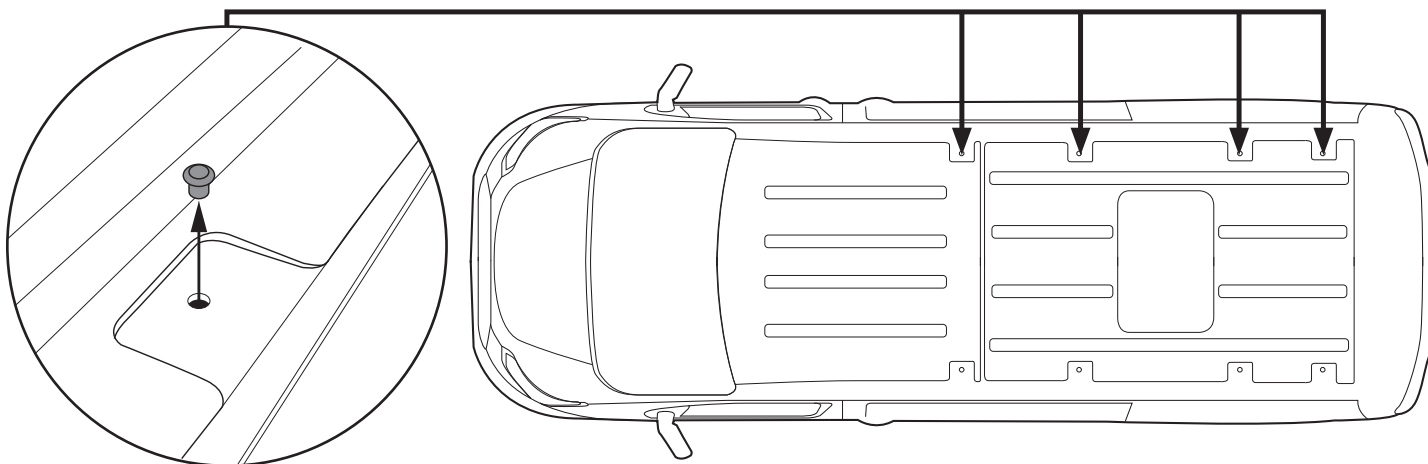


Step 1

Identify the factory crossbars mounts on the roof of the vehicle. These are identified by rubber plugs. Select the positions you wish to install your crossbars. Use a trim tool and carefully remove the corresponding plugs.

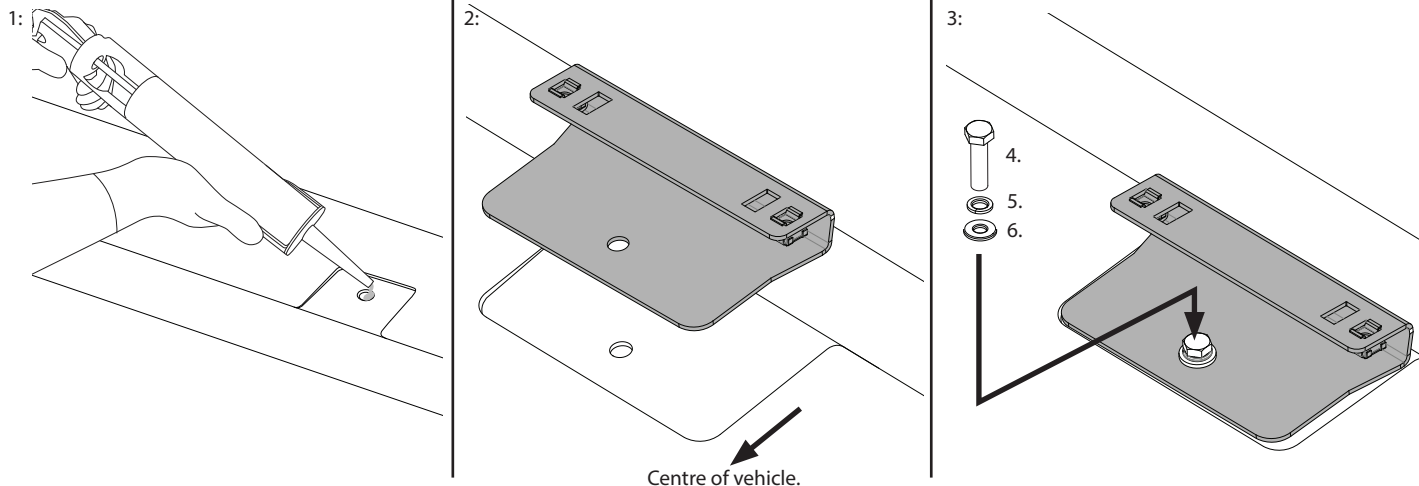
Required tools:

- 1 - Trim tool.
- 2 - 13mm spanner.
- 3 - Butyl Mastic Sealant .



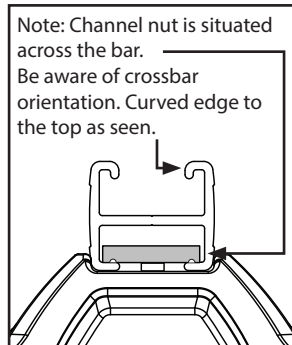
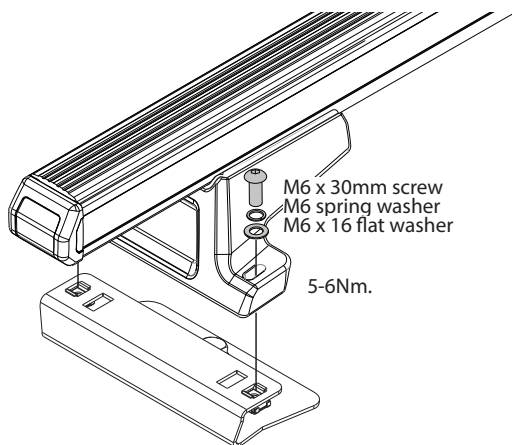
Step 2

- 1 - Carefully apply butyl mastic to the newly exposed threaded holes.
- 2 - Place the brackets into place over the holes, fix in place with the M8 hardware.
- 3 - Tighten to 12Nm with a 13mm spanner.



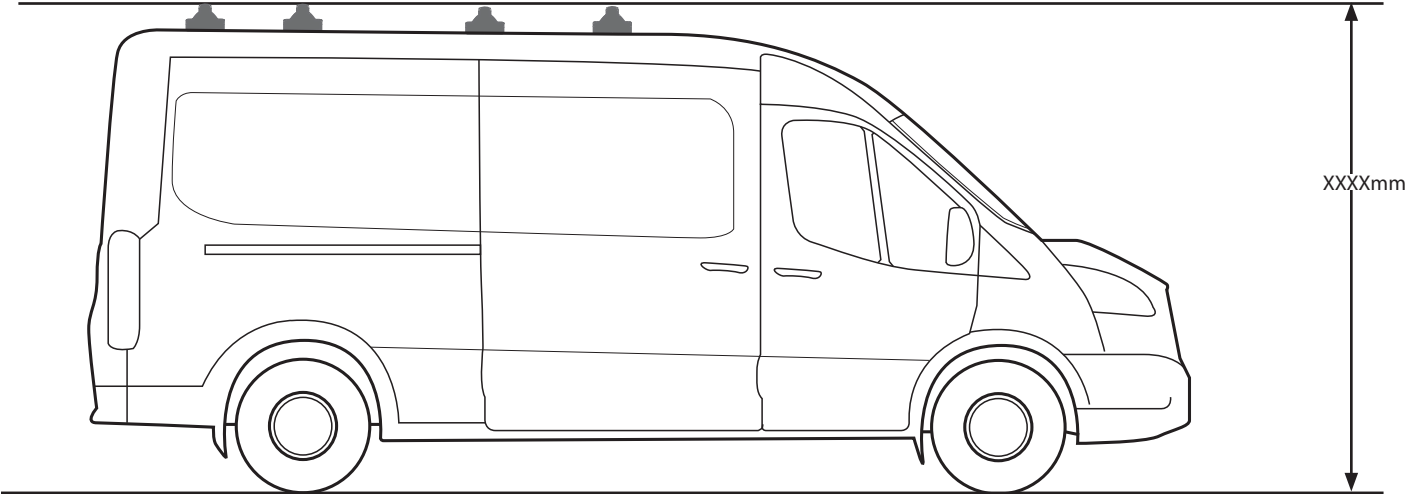
Step 3

Complete crossbar mount kits as specified in their instructions. Place the crossbars onto the installed brackets in the roof. Fix in place with the M6 hardware provided and tighten with the allen key provided.

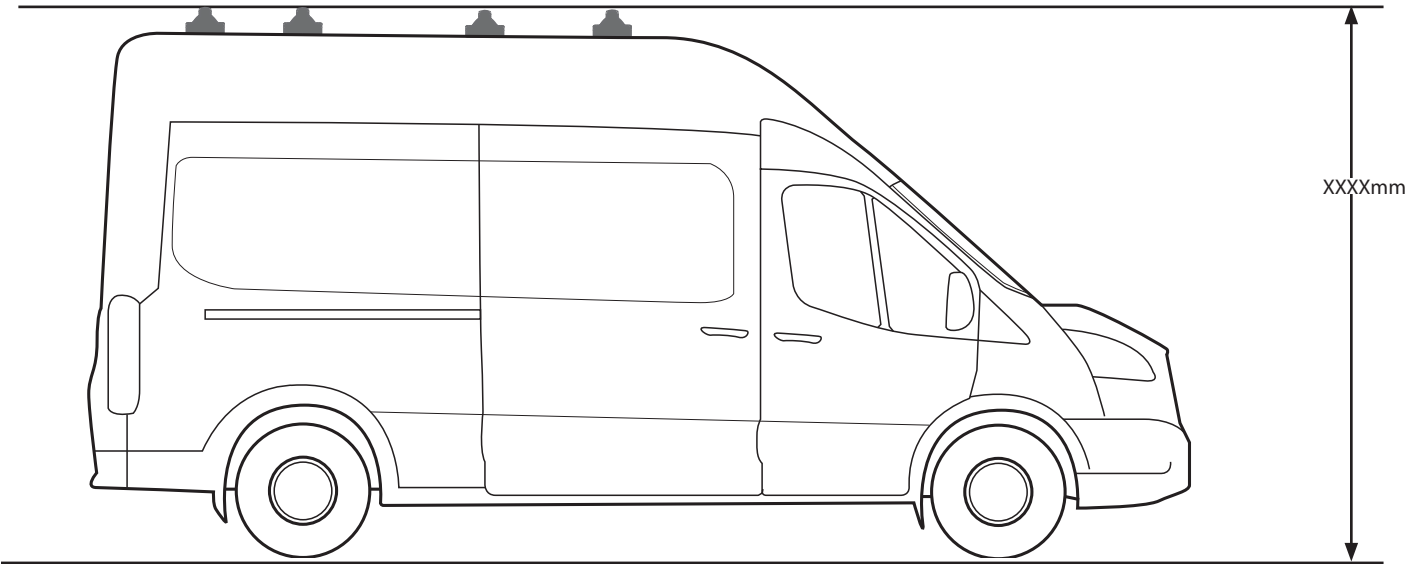


ATTENTION:
Thoroughly check all fasteners are secure before driving away. Always check your specific vehicles height.

350L LWB RWD/FWD



350L LWB HIGH ROOF RWD/FWD



350E 470E JUMBO RWD/FWD

